

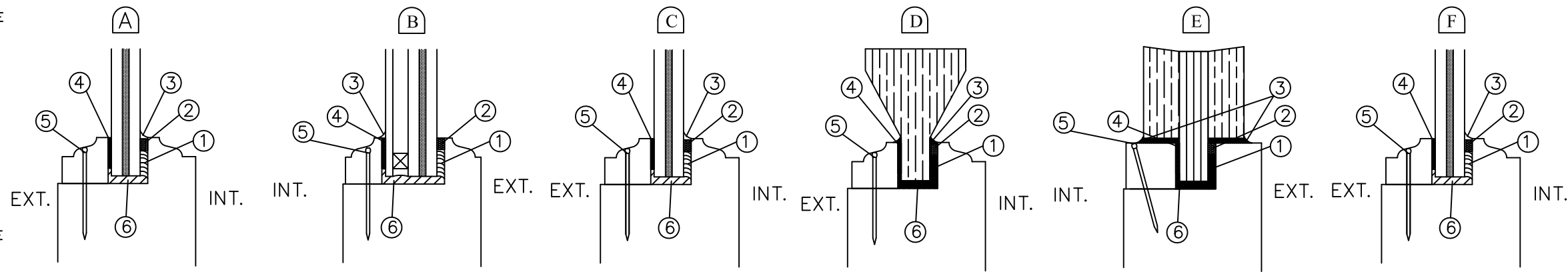
SERIES 1000
WOOD & WOOD CLAD MAHOGANY OUTSWING GLAZED & SOLID DOORS, SIDELITE & TRANSOM
BY OWW LLC

DESIGN PRESSURE = + 60.0 PSF, - 60.0 PSF

GENERAL NOTES

1. THESE DOORS, SIDELITES, AND TRANSOMS, FABRICATED AND ANCHORED AS DETAILED IN THIS DRAWING, ARE LARGE MISSILE IMPACT RESISTANT AND DO NOT REQUIRE THE USE OF IMPACT PROTECTIVE DEVICES (SHUTTERS) IN WINDBORNE DEBRIS REGIONS.
2. THIS PRODUCT HAS BEEN TESTED TO TAS 201/202/203, AND MEETS THE REQUIREMENTS OF THE FLORIDA BUILDING CODE, CURRENT EDITION, INCLUDING THE HIGH VELOCITY HURRICANE ZONE.
3. ALLOWABLE CONFIGURATIONS ARE AS INDICATED HEREIN. SUBJECT TO DAYLIGHT OPENING (D.O.) LIMITATIONS AS INDICATED, ANY PANEL OR LITE INDICATED IN THIS APPROVAL MAY BE GLAZED OR OPAQUE PANEL. UNLIMITED DOORS AND SIDELITES MAY BE JOINED TOGETHER WITH AN OPENING PROVIDED THAT ALL RESTRICTIONS PER THESE DRAWINGS ARE MET AND THE OPENING IS PROPERLY DESIGNED BY OTHERS TO ACCEPT AND TRANSFER THE LOADS IMPOSED BY THE DOORS OR FIXED GLASS. EXAMPLE CONFIGURATIONS ARE SHOWN BUT NOT LIMITED TO THOSE ON SHEET 15D.
4. THE DESIGN PRESSURE RATINGS OF +/-60 PSF ARE AS LIMITED BY ASTM E-1300 GLASS TABLES FOR GLAZED PRODUCT, AND TESTED WATER, STRUCTURAL, AND CYCLIC PRESSURES.
5. THE 4/3 ALLOWABLE STRESS INCREASE FACTOR (SHORT-TERM INCREASE FACTOR) HAS NOT BEEN USED IN THE ANCHOR ANALYSIS FOR THIS SYSTEM. THE 1.6 Cd FACTOR WAS USED IN THE ANALYSIS OF ANCHORAGE INTO WOOD SUBSTRATE.
6. INSTALLATION OF WOOD BUCKS TO THE SUBSTRATE TO BE ENGINEERED BY OTHERS OR AS APPROVED BY THE AUTHORITY HAVING JURISDICTION (A.H.J.). BUCKING, OPENINGS, & BUCKING FASTENERS MUST BE PROPERLY DESIGNED & INSTALLED BY OTHERS IN ACCORDANCE WITH THE FBC TO TRANSFER SUPERIMPOSED LOADS TO THE STRUCTURE. ADEQUACY OF THE STRUCTURE TO RECEIVE THESE LOADS SHALL BE VERIFIED BY THE CONTRACTOR, ARCHITECT OR ENGINEER OF RECORD, OR A.H.J. WHEN INSTALLING INTO CONCRETE (OR MASONRY AT JAMBS ONLY) WITH WOOD BUCKS LESS THAN 1-1/2" THICK, ANCHOR EMBEDMENT SHALL BE INTO CONCRETE (OR MASONRY AT JAMBS ONLY). WHEN INSTALLING INTO WOOD BUCKS 1-1/2" OR THICKER OVER CONCRETE (OR MASONRY AT JAMBS ONLY), ANCHOR EMBEDMENT SHALL BE INTO THE WOOD.
7. DISSIMILAR MATERIALS THAT COME INTO CONTACT SHALL BE COATED OR OTHERWISE PROTECTED TO PREVENT GALVANIC REACTIONS. WOOD BUCKS, IF USED, SHALL BE PRESSURE TREATED, WITH EITHER A TREATMENT OR COATING COMPATIBLE WITH THIS PRODUCT. ALL ANCHORS USED SHALL BE OF A MATERIAL OR HAVE A COATING COMPATIBLE WITH THE PRESSURE TREATED WOOD BUCKS AND ALL OTHER WINDOW MATERIALS.
8. ALL HARDWARE & FASTENERS SHALL BE IN ACCORDANCE WITH THESE DRAWINGS, OR AS APPROVED, SIGNED, AND SEALED BY A FLORIDA-REGISTERED PROFESSIONAL ENGINEER ON A SITE-SPECIFIC BASIS.
9. SEALING AND FLASHING STRATEGIES FOR OVERALL WATER INFILTRATION RESISTANCE OF THE INSTALLED PRODUCT SHALL BE THE RESPONSIBILITY OF OTHERS AND IS NOT ADDRESSED BY THIS DOCUMENT.
10. FOR PRODUCT ATTACHMENT TO THE OPENING SUBSTRATE, NO TWO INSTALLATION ANCHORS MAY BE CLOSER THAN 4" ON CENTER UNLESS OTHERWISE NOTED. INSTALLATION ANCHORS AS INDICATED IN TABLE 1 SHALL BE INSTALLED IN ACCORDANCE WITH ANCHOR MANUFACTURER'S INSTRUCTIONS WITH MINIMUM SUBSTRATE STRENGTH AS SHOWN IN TABLE 1.

- 1 STRUCTURAL SILICONE
TREMCO SPECTRUM 2
- 2 FOAM GLAZING TAPE
NORSEAL V990
- 3 SILICONE CAP BEAD
- 4 FOAM GLAZING TAPE
NORSEAL V990
- 5 1 1/2" S.S. NAIL
18 GAUGE @ 8" O.C.
- 6 SETTING BLOCKS &
STRUCTURAL SILICONE
TREMCO SPECTRUM 2
COMPLIES 2411.3.3.1



SEE SHEET 15D FOR FURTHER OPTIONS

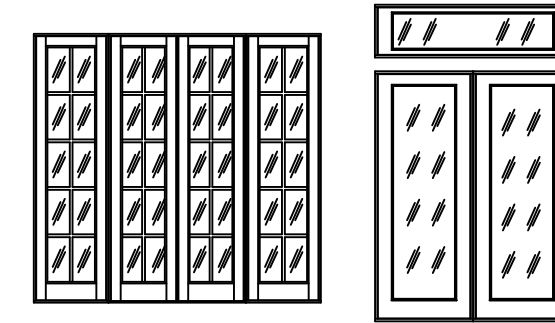


TABLE 1. QUALIFIED ANCHOR INFORMATION

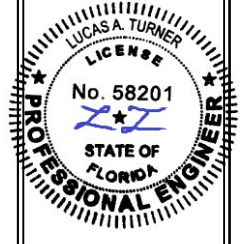
ID	SUBSTRATE	ANCHOR	MIN. EMBEDMENT	MIN. EDGE DISTANCE
A	SOLID UNCRACKED CONCRETE (3.05 KSI MIN.)	1/4" DEWALT COATED CARBON STEEL ULTRACON+	1 3/8"	2 1/2"
B	GROUT-FILLED CMU (ASTM C-90) (JAMBS ONLY)	1/4" DEWALT COATED CARBON STEEL ULTRACON+	1 3/4"	2 1/2"
C	SOLID UNCRACKED CONCRETE (2000 PSI MIN.)	1/4" ITW COATED CARBON STEEL TAPCON	1 1/2"	1 1/2"
D	HOLLOW CMU (117 PCF MIN.) (JAMBS ONLY)	1/4" ITW COATED CARBON STEEL TAPCON	1"	2"
E	CONCRETE (3000 PSI MIN)	1/4" HILTI COATED CARBON STEEL OR STAINLESS STEEL KWIK-CON II	1"	2 1/2"
F	HOLLOW OR GROUT-FILLED CMU (ASTM C-90)	1/4" HILTI COATED CARBON STEEL OR STAINLESS STEEL KWIK-CON II	1"	2 1/2"
G	2x MIN. SOUTHERN PINE WOOD (G=0.55 MIN)	#12 GRADE 5 WOOD SCREW	1 1/2"	1"
H	16 GAUGE (0.060") MIN. STEEL STUD (33 KSI YIELD MIN.) OR 1/8" MIN. ALUMINUM (6063-T5 MIN.)	#14 ITW TEKS SELF-DRILLING SCREW	FULL + 3 THREADS	1/2"

GLASS TYPES AND STRUCTURE

- A** 7/16" (NOM.) STORM GLASS
3/16" ANNEALED /
.075" INTERLAYER: SAFLEX CP BY
EASTMAN CHEMICAL COMPANY /
3/16" ANNEALED
- B** 15/16" (NOM.) STORM INSULATING GLASS
3/16" FULLY TEMPERED INT. LITE /
1/4" AIR SPACE WITH ALUMINUM SPACER /
3/16" ANNEALED
.075" INTERLAYER: SAFLEX CP BY
EASTMAN CHEMICAL COMPANY /
3/16" ANNEALED
- C** 9/16" (NOM.) STORM GLASS
1/4" ANNEALED /
.075" INTERLAYER: SAFLEX CLEAR AND
COLOR BY EASTMAN CHEMICAL CO. /
1/4" ANNEALED
- F** 9/16" (NOM.) LAMINATED GLASS
1/4" HEAT STRENGTHENED /
.090" INTERLAYER: SENTRYGLAS BY KURARAY /
1/4" HEAT STRENGTHENED

PANEL TYPES AND STRUCTURE

- D** 1 3/4" SOLID RAISED PANEL
- E** 1/2" MARINE PLYWOOD CORE
WITH APPLIED T&G PLANKING



10/18/2023

TE&C
LUCAS A. TURNER, P.E. FL PE 58201
TURNER ENGINEERING & CONSULTING, INC.
PH. 941-380-1574
2428 OLD MATCHEZ TRACE TRAIL
CAMDEN, TN 38320

OWW LLC
3001 Tuxedo Ave., West Palm Beach, FL 33405
Ph. 561-478-7233 Fax 561-478-7858

Product: WOOD & WOOD CLAD MAHOGANY OUTSWING GLAZED & SOLID DOORS, SIDELITE & TRANSOM

DOOR NOTES AND SPECIFICATIONS

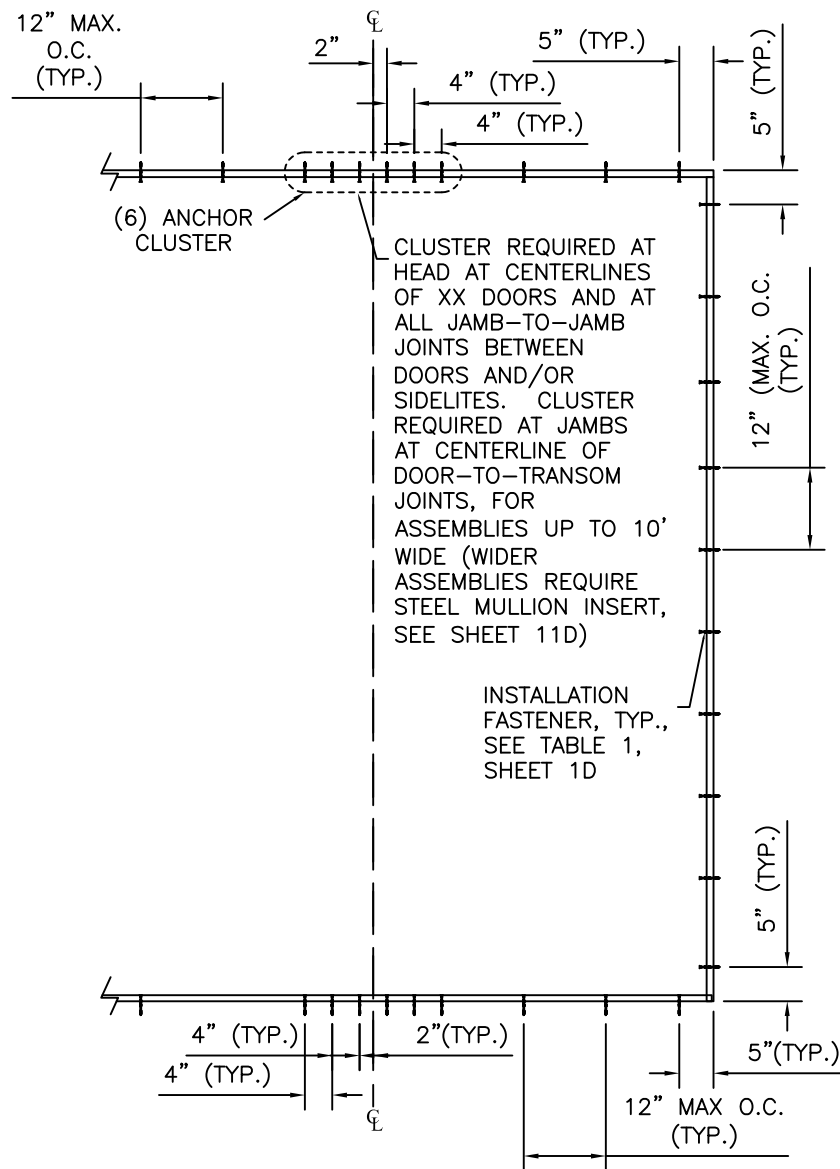
Date: 12-18-13
Scale: None
Drawn: JDS

Dwg: 1000-Door
FL30774.1

Sheet No.
1D OF 15

TYPICAL THROUGH-FRAME INSTALLATION ANCHORAGE

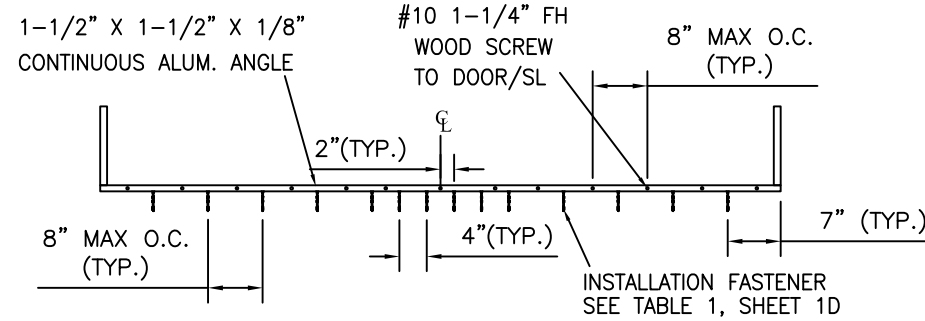
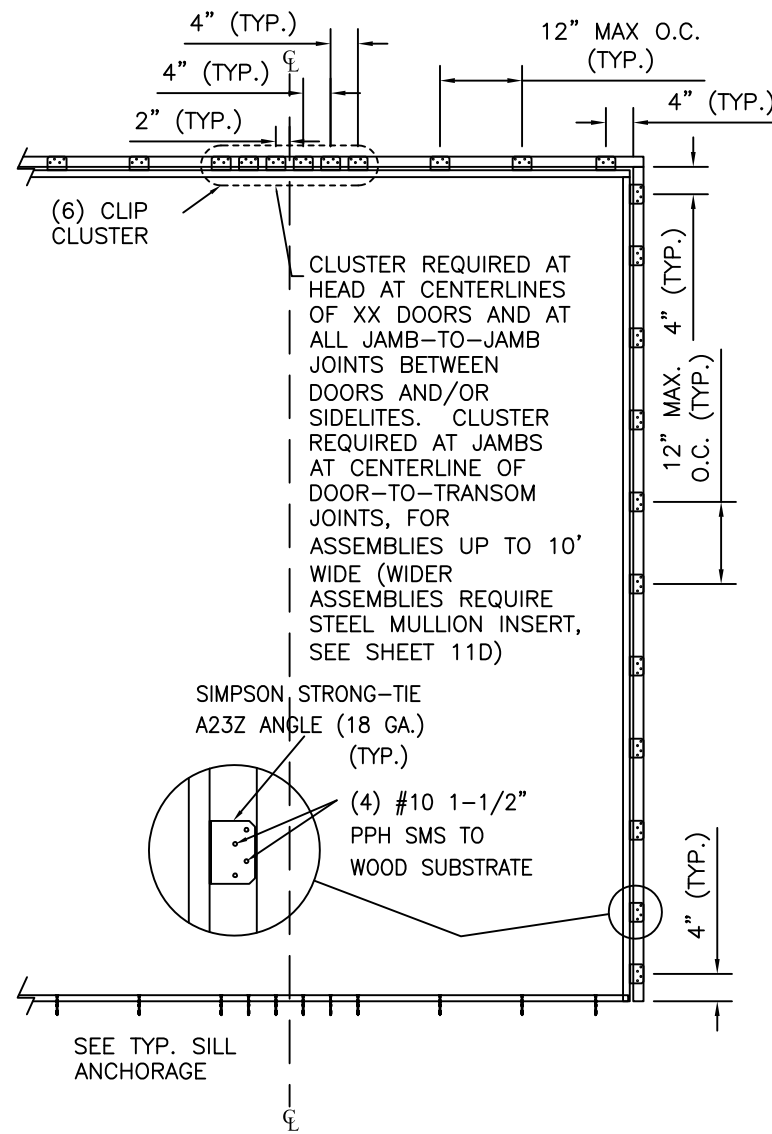
(APPLIES TO DOORS, SIDELITES, AND TRANSOMS)



TYPICAL SILL ANCHORAGE

TYPICAL ANGLE CLIP INSTALLATION ANCHORAGE

(APPLIES TO DOORS, SIDELITES, AND TRANSOMS)

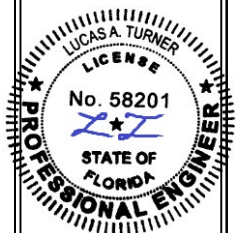
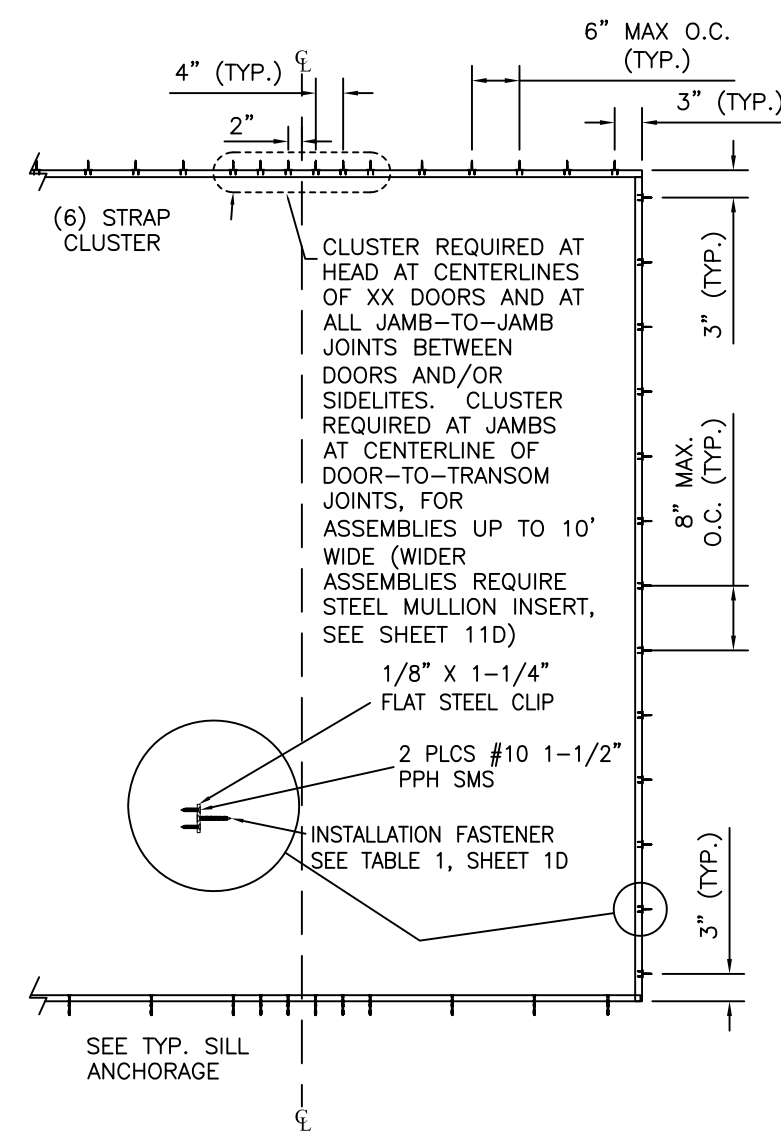


ALT. SILL ANCHORAGE ALUMINUM ANGLE

(MAY BE USED WITH ANY
HEAD/JAMB ANCHORAGE METHOD)

TYPICAL FLAT STRAP INSTALLATION ANCHORAGE

(APPLIES TO DOORS, SIDELITES, AND TRANSOMS)



10/18/2023

TE&C
LUCAS A. TURNER, P.E. FL PE 58201
TURNER ENGINEERING & CONSULTING, INC.
PH. 941-380-1574
2428 OLD MATCHEZ TRACE TRAIL
CAMDEN, TN 38320

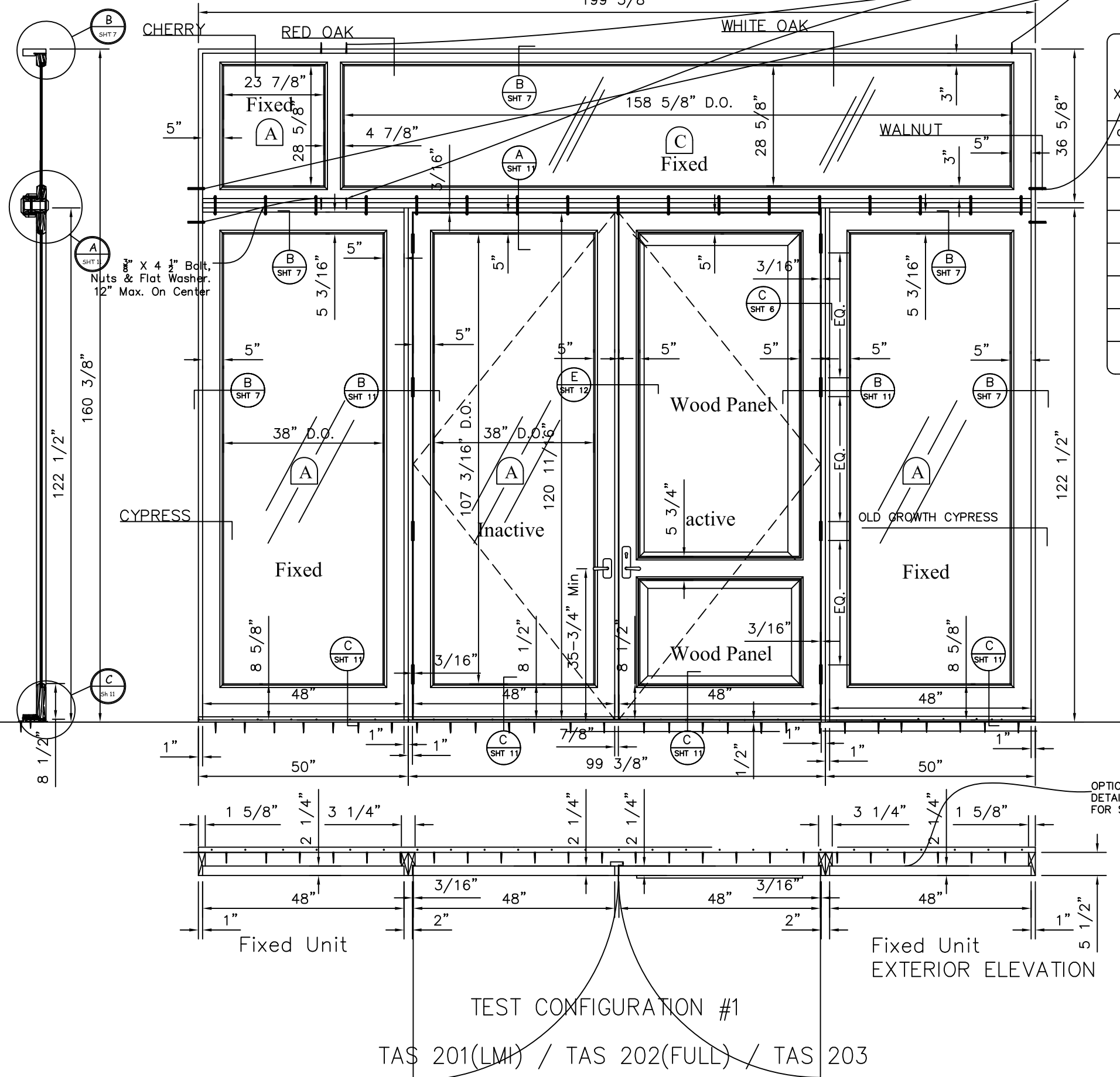
OWW LLC
3001 Tuxedo Ave., West Palm Beach, FL 33405
Ph. 561-478-7233 Fax 561-478-7858

Product: WOOD & WOOD CLAD MAHOGANY OUTSWING GLAZED & SOLID DOORS, SIDELITE & TRANSOM
Date: 12-18-13
Scale: None
Drawn: JDS
ALTERNATIVE ATTACHMENT METHODS

Dwg: 1000-Door
FL30774.1
Sheet No.
2D OF 15

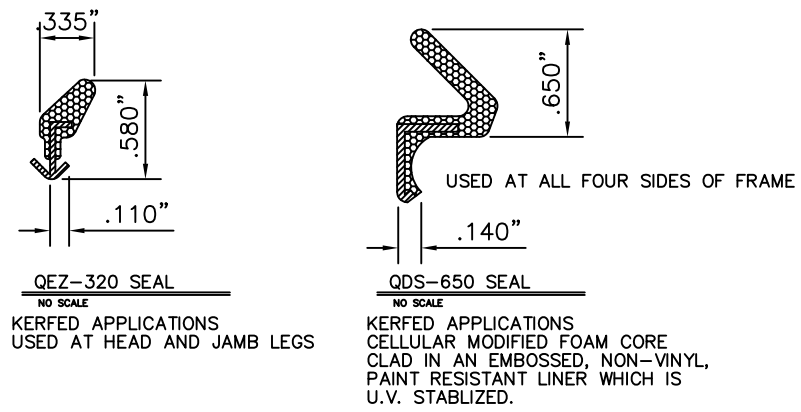
I.G. -GLASS-TYPE "B": MAX. D.L.O. OF 120" LIMITED PER ASTM E 1300-09a
 GLASS -TYPES "A & C" MAX. D.L.O. OF 158 5/8" AS TESTED
 199 3/8"

ADDITIONAL ANCHORS DUE TO THE POINT LOAD
 AT SIDELITES AND TRANSOM. ASTRAGAL ALREADY
 STRENGTHEN BY ANCHORING PLATE SEE 13D OF 15



DESIGN PRESSURE: +60/-60 PSF
 HARDWARE AND WEATHERSTRIPPING PER UNIT:
 X x Y ≤ 40 SQ. FT.

Quantity	Location	Description
1	Center of Active Rail Leaf	Schlegel or Hoppe HLS7/9000 Multi-Point Lock
4	Door Jamb	4 1/2" x 4 1/2" Butt Hinges
2	Inactive Door Rail	Custom Flush Bolts or Hoppe HLS7/9000 inactive
1	Located on sill rail	Pemko model 159B threshold Modified
38lf.±	Used on all four sides of frame for a positive seal between frame and sash	Schlegel Q-Lon QDS-650 cellular modified foam core clad in an embossed, non-vinyl paint resistant liner which is U.V. stabilized
4lf.±	Bottom edge of Door	Schlegel # 1556-8601-D Kerf Pile Brush
24lf.±	Top Rail & Stiles of Doors	Schlegel Q-Lon QEZ-320 seal



OPTIONAL ANCHORAGE SEE SHEET 13D OF 15
 DETAIL C
 FOR SPECIFICATIONS

TEST CONFIGURATION #1
 TAS 201(LMI) / TAS 202(FULL) / TAS 203

LUCAS A. TURNER
 LICENSE No. 58201
 STATE OF FLORIDA
 PROFESSIONAL ENGINEER

10/18/2023

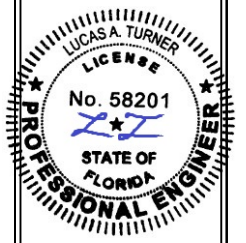
TE&C
 LUCAS A. TURNER, P.E. FL PE 58201
 TURNER ENGINEERING & CONSULTING, INC.
 PH. 941-380-1574
 2428 OLD MATCHEZ TRACE TRAIL
 CAMDEN, TN 38320

OWW LLC
 3001 Tuxedo Ave., West Palm Beach, FL 33405
 Ph. 561-478-7233 Fax 561-478-7858

Product: WOOD & WOOD CLAD MAHOGANY OUTSWING GLAZED & SOLID DOORS, SIDELITE & TRANSOM
 Date: 12-18-13
 Scale: 1" = 1'0"
 Drawn: JDS

OUTSWING DOOR WITH SIDELITES
 SPECIMEN #1

Dwg: 1000-Door
 FL30774.1
 Sheet No.
 3D OF 15



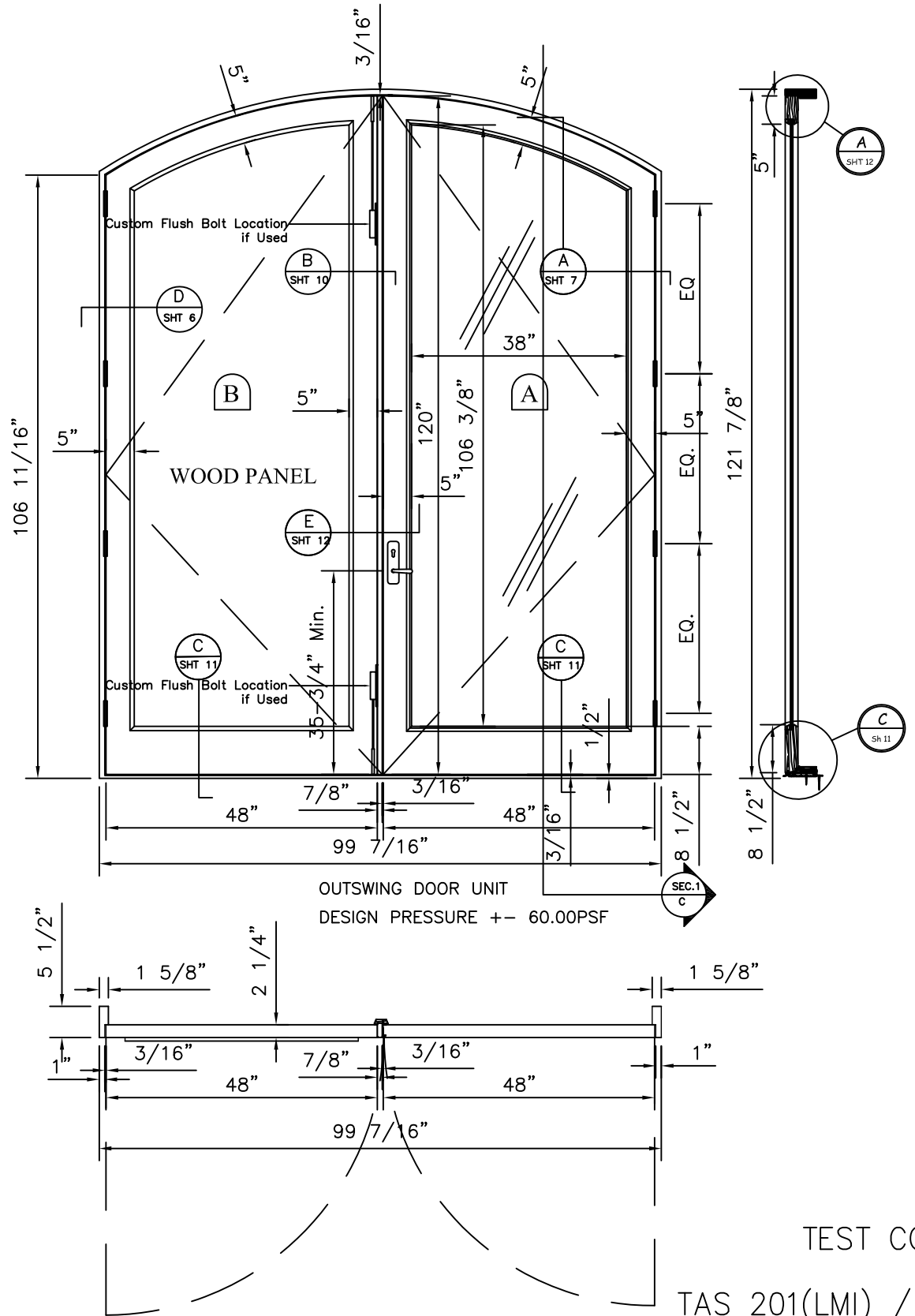
10/18/2023

TE&C
 LUCAS A. TURNER, P.E. FL PE 58201
 TURNER ENGINEERING & CONSULTING, INC.
 PH. 941-380-1574
 2428 OLD MATCHEZ TRACE TRAIL
 CAMDEN, TN 38320

OWW LLC
 3001 Tuxedo Ave., West Palm Beach, FL 33405
 Ph. 561-478-7233 Fax 561-478-7858

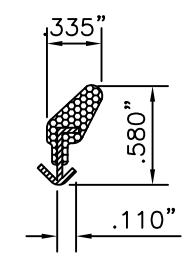
Product: WOOD & WOOD CLAD MAHOGANY OUTSWING GLAZED & SOLID DOORS, SIDELITE & TRANSOM
 Date: 12-18-13
 Scale: 1" = 1'0"
 Drawn: JDS
 OUTSWING DOOR WITH GLASS PANEL SPECIMEN #2

Dwg: 1000-Door
 FL30774.1
 Sheet No.
 4D OF 15

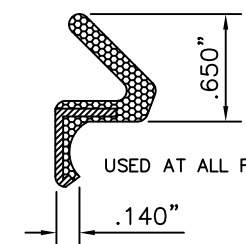


DESIGN PRESSURE: +60/-60 PSF
 X x Y ≤ 40 SQ. FT. HARDWARE AND WEATHERSTRIPPING PER UNIT:
 WinkHaus or KfV Multi-Point Lock System

Quantity	Location	Description
1	Center of Active Rail Leaf	WinkHaus or KfV Multi-Point Lock
4	Door Jamb	4 1/2" x 4 1/2" Butt Hinges
2	Inactive Door Rail	Custom Flush Bolt or KfV inactive
2	Active Door Rail	Custom or WinkHaus or KfV Flush Bolt
1	Located on sill rail	Pemko model 159B threshold Modified
38lf.±	Used on all four sides of frame for a positive seal between frame and sash	Schlegel Q-Lon QDS-650 cellular modified foam core clad in an embossed, non-vinyl paint resistant liner which is U.V. stabilized
4lf.±	Bottom edge of Door	Schlegel # 1556-8601-D Kerf Pile Brush
24lf.±	Top Rail & Stiles of Doors	Schlegel Q-Lon QEZ-320 seal



QEZ-320 SEAL
 NO SCALE
 KERFED APPLICATIONS
 USED AT HEAD AND JAMB LEGS

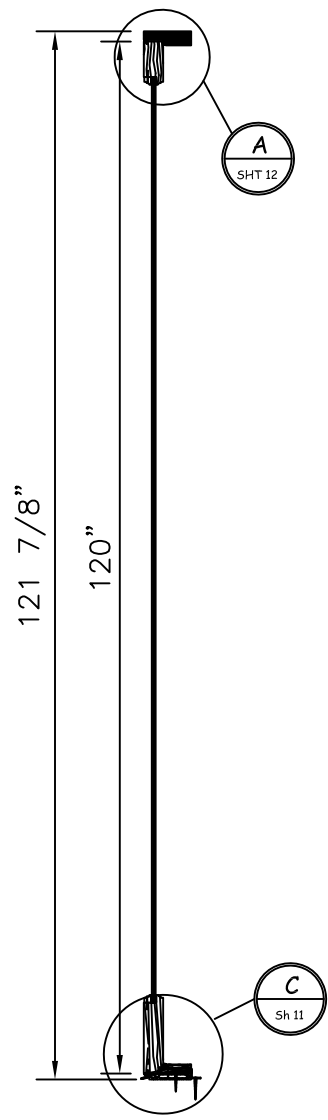
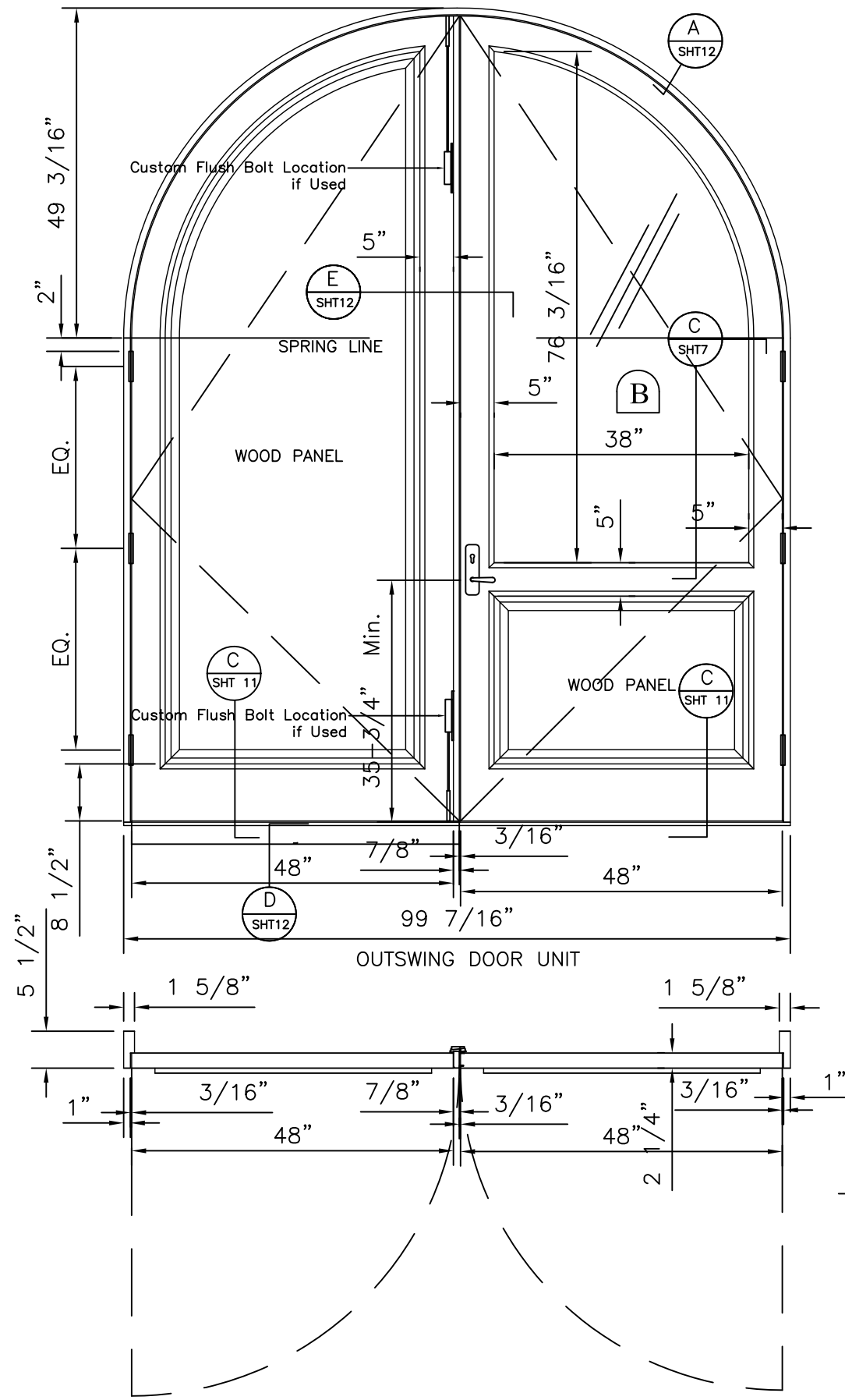


QDS-650 SEAL
 NO SCALE
 KERFED APPLICATIONS
 CELLULAR MODIFIED FOAM CORE CLAD IN AN EMBOSSED, NON-VINYL, PAINT RESISTANT LINER WHICH IS U.V. STABILIZED.

USED AT ALL FOUR SIDES OF FRAME

TEST CONFIGURATION #2

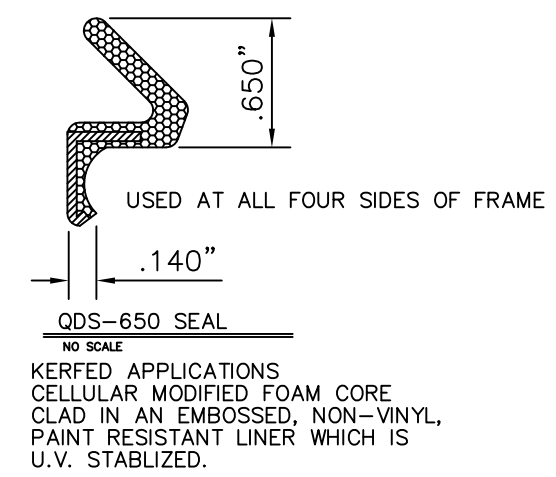
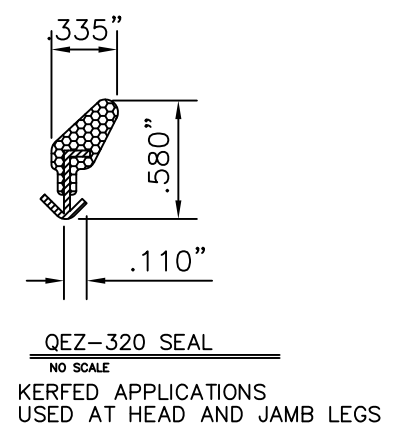
TAS 201(LMI) / TAS 202(FULL) / TAS 203



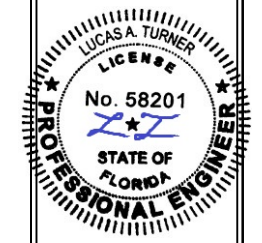
DESIGN PRESSURE: +75/-75 PSF
HARDWARE AND WEATHERSTRIPPING PER UNIT:

X x Y ≤ 40 SQ.FT.

Quantity	Location	Description
1	Center of Active Rail Leaf	Schlegel or Hoppe HLS7/9000 Multi-Point Lock
4	Door Jamb	4 1/2" x 4 1/2" Butt Hinges
2	Inactive Door Rail	Custom Flush Bolts or Hoppe HSL7/9000 inactive
1	Located on sill rail	Pemko model 159B threshold Modified
38lf.±	Used on all four sides of frame for a positive seal between frame and sash	Schlegel Q-Lon QDS-650 cellular modified foam core clad in an embossed, non-vinyl paint resistant liner which is U.V. stabilized
4lf.±	Bottom edge of Door	Schlegel # 1556-8601-D Kerf Pile Brush
24lf.±	Top Rail & Stiles of Doors	Schlegel O-Lon QEZ-320 seal



TEST CONFIGURATION #3
TAS 201(LMI) / TAS 202(FULL) / TAS 203



10/18/2023

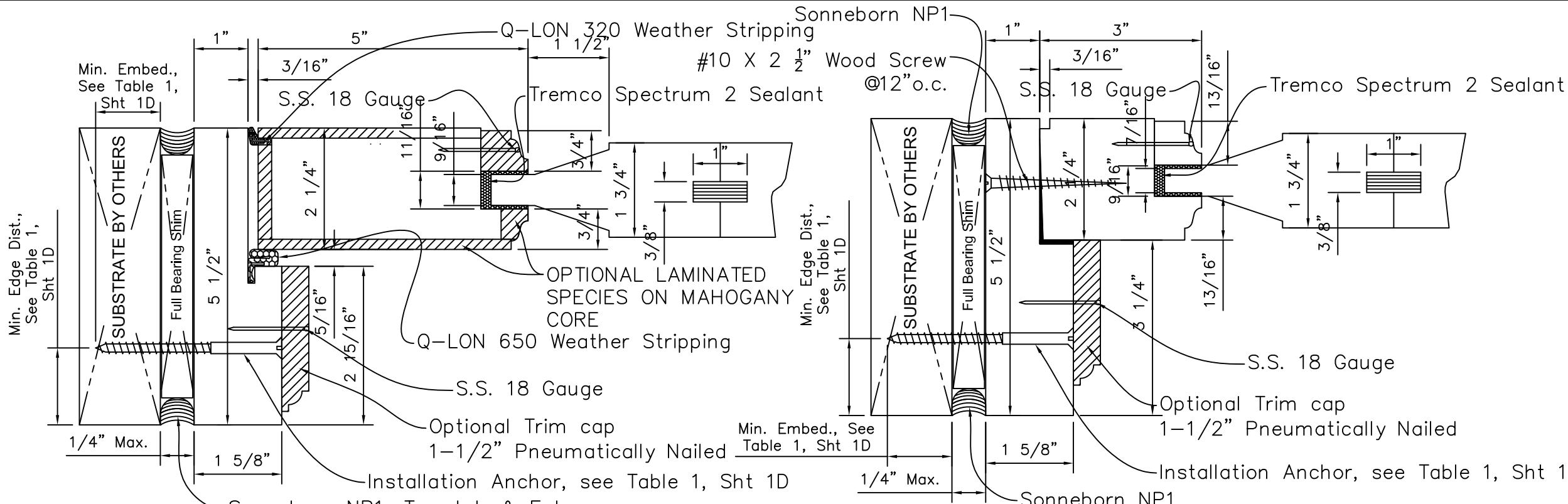
TE&C
LUCAS A. TURNER, P.E. FL PE 58201
TURNER ENGINEERING & CONSULTING, INC.
PH. 941-380-1574
2428 OLD MATCHEZ TRACE TRAIL
CAMDEN, TN 38320

OWW LLC
3001 Tuxedo Ave., West Palm Beach, FL 33405
Ph. 561-478-7233 Fax. 561-478-7858

Product: WOOD & WOOD CLAD MAHOGANY OUTSWING GLAZED & SOLID DOORS, SIDELITE & TRANSOM
Date: 12-18-13
Scale: 1" = 1'0"
Drawn: JDS
OUTSWING DOOR WOOD & GLASS PANEL SPECIMEN #3

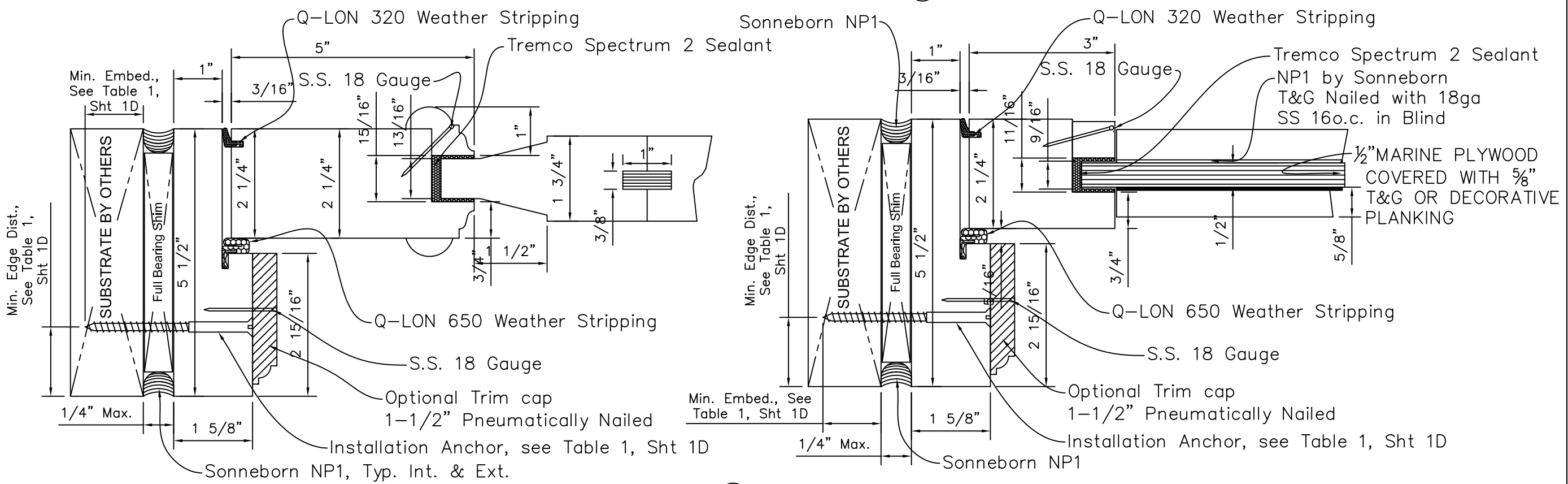
Dwg: 1000-Door
FL30774.1

Sheet No.
5D OF 15



A OPTION FOR STOPS WITH PANEL D
FULL SCALE

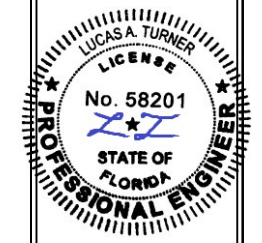
B OPTION FOR PANEL D ON SIDELITES
FULL SCALE



C OPTION FOR STOPS WITH PANEL E
FULL SCALE

D OPTION FOR STOPS WITH PANEL E
FULL SCALE

FOR PANEL TYPES SEE SHEET 1D



10/18/2023

TE&C
LUCAS A. TURNER, P.E. FL PE 58201
TURNER ENGINEERING & CONSULTING, INC.
PH. 941-380-1574
2428 OLD MATCHEZ TRACE TRAIL
CAMDEN, TN 38320

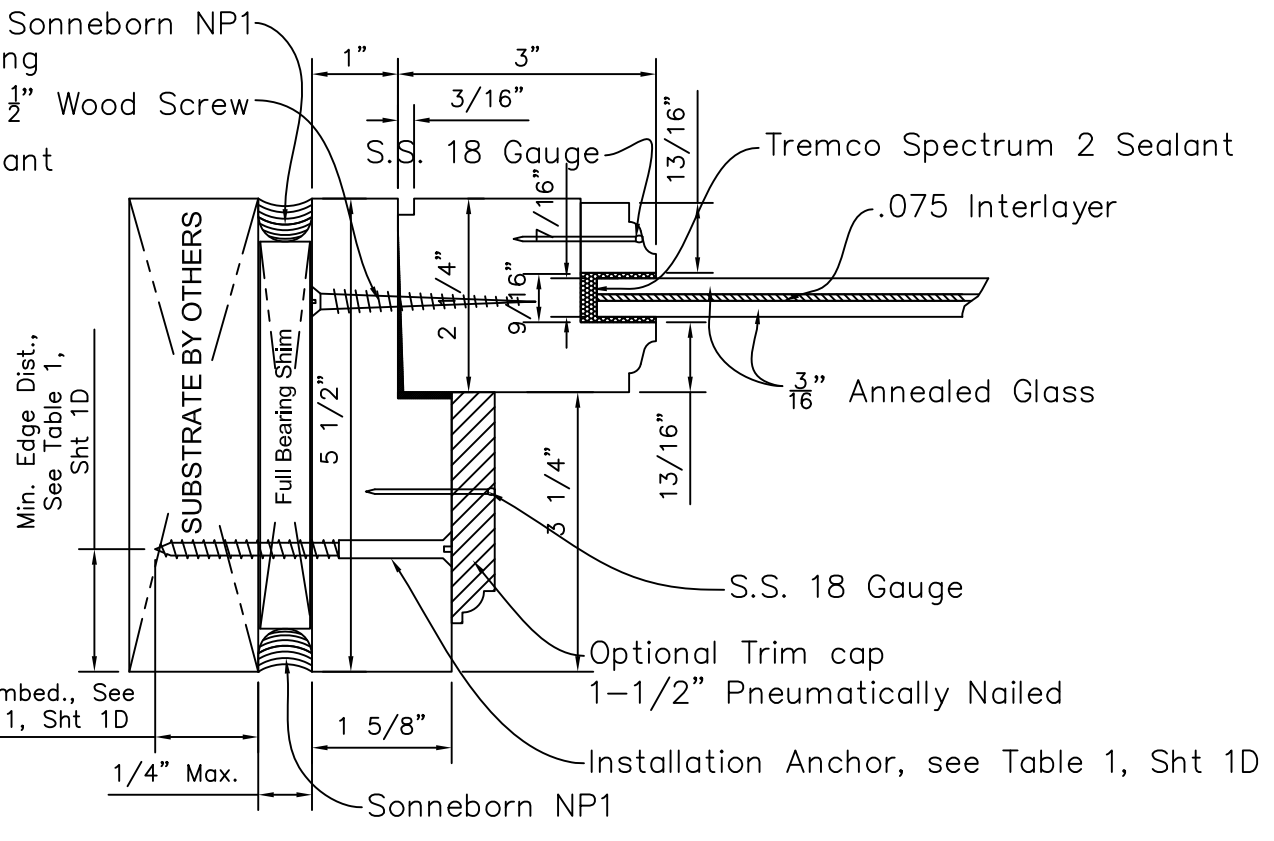
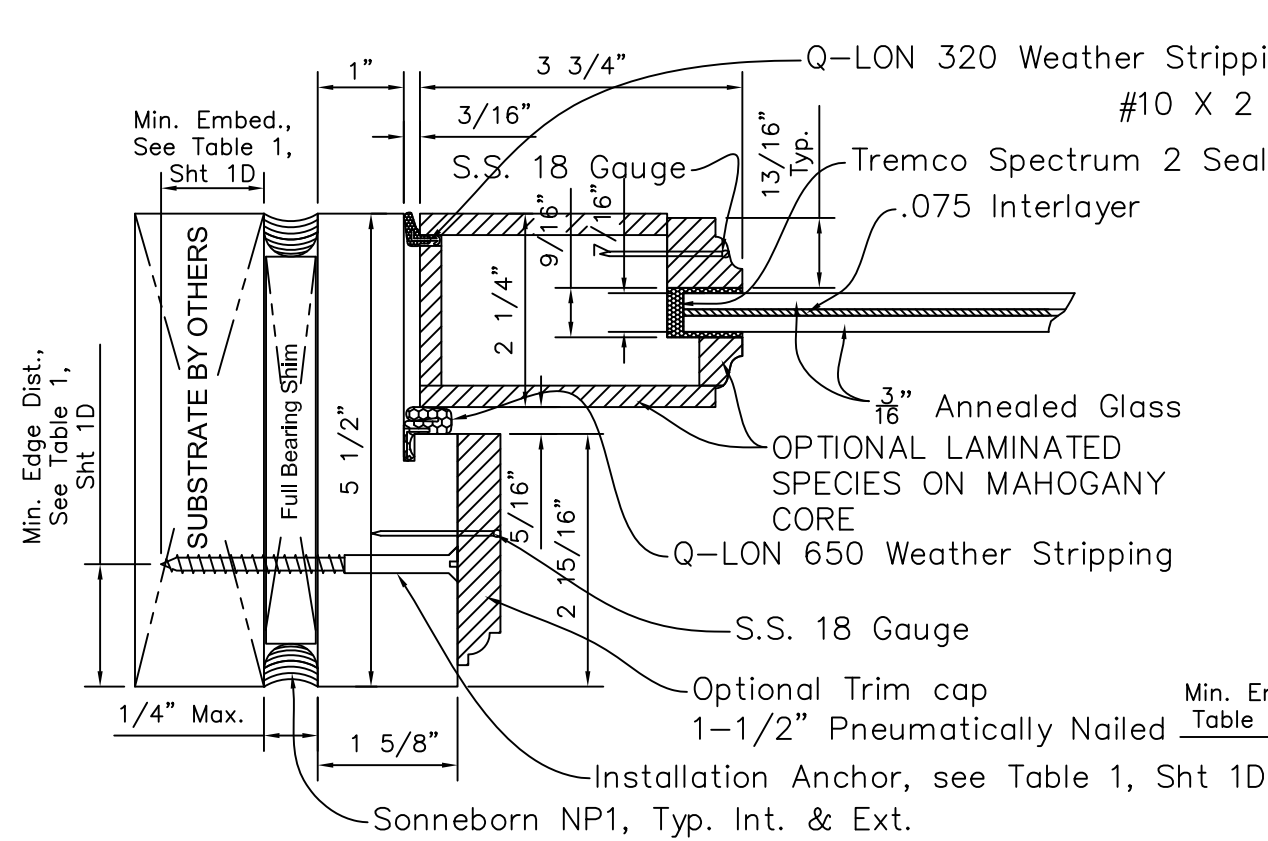
OWW LLC
3001 Tuxedo Ave., West Palm Beach, FL 33405
Ph. 561-478-7233 Fax 561-478-7858

Product: WOOD & WOOD CLAD MAHOGANY OUTSWING GLAZED & SOLID DOORS, SIDELITE & TRANSOM

Date: 12-18-13
Scale: 1/4" = 1'-0"
Drawn: JDS

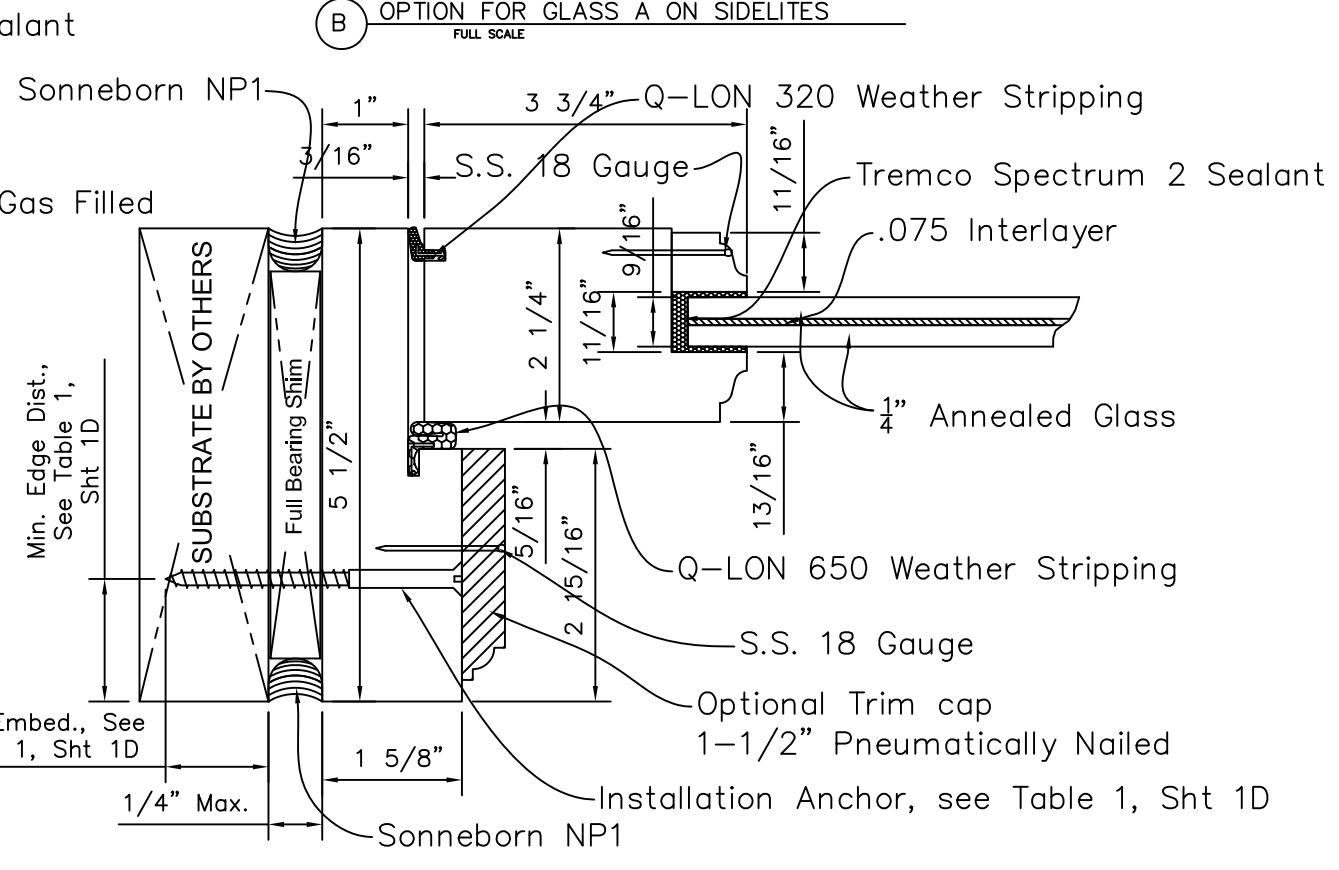
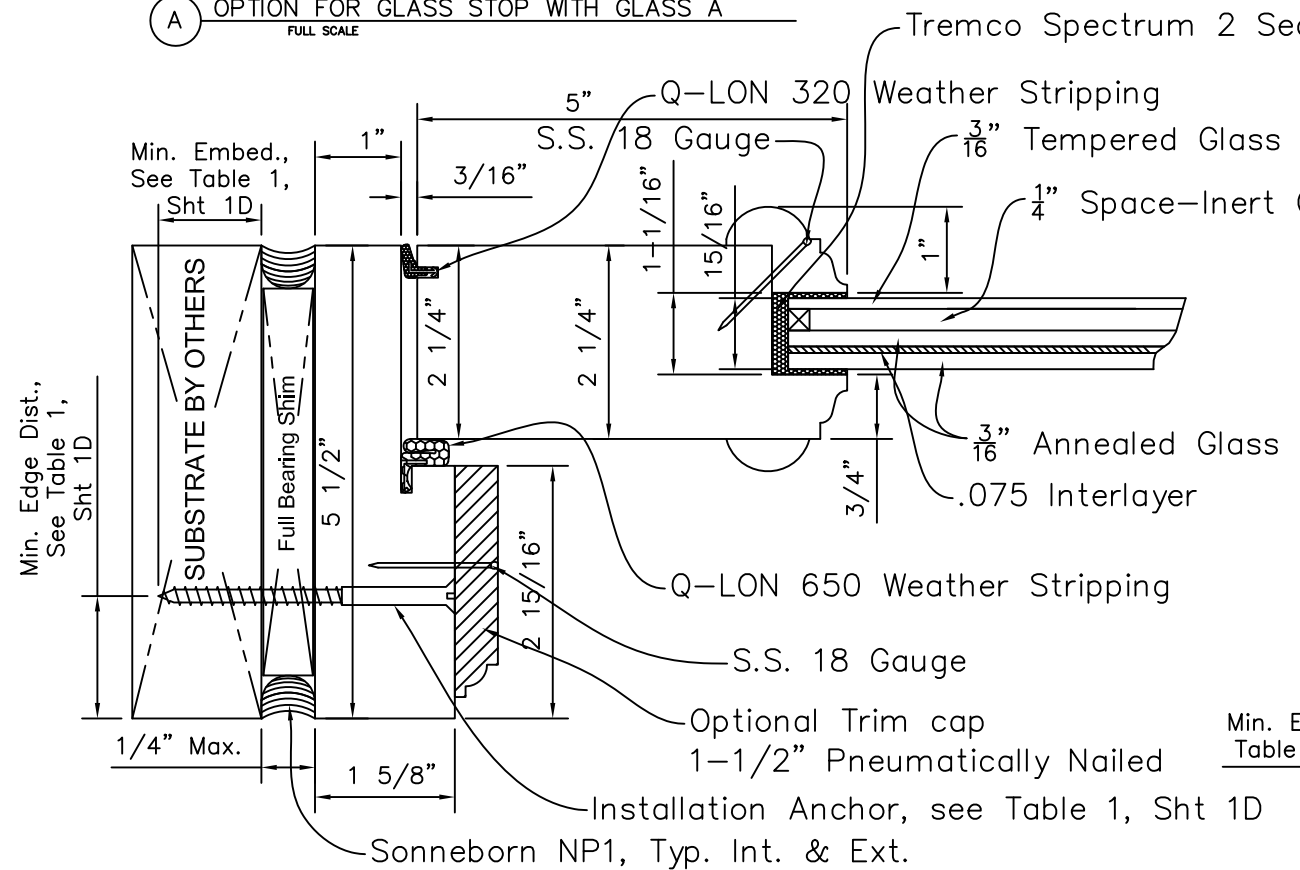
Dwg: 1000-Door
FL30774.1

Sheet No.
6D OF 15



A OPTION FOR GLASS STOP WITH GLASS A
FULL SCALE

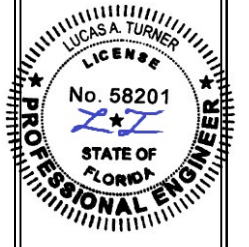
B OPTION FOR GLASS A ON SIDELITES
FULL SCALE



C OPTION FOR GLASS STOP WITH INSUL GLASS B
FULL SCALE

D OPTION FOR GLASS STOP WITH GLASS C
FULL SCALE

FOR GLAZING TYPES SEE SHEET 1D



10/18/2023

TE&C
LUCAS A. TURNER, P.E. FL PE 58201
TURNER ENGINEERING & CONSULTING, INC.
PH. 941-380-1574
2428 OLD MATCHEZ TRACE TRAIL
CAMDEN, TN 38320

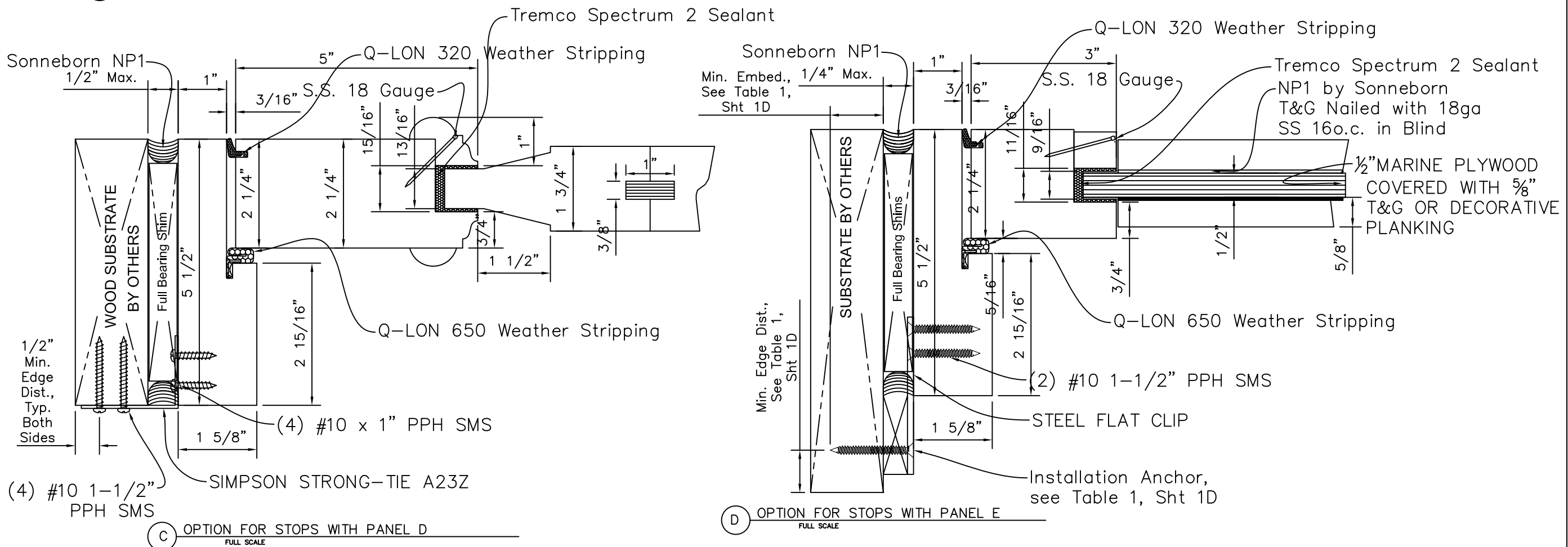
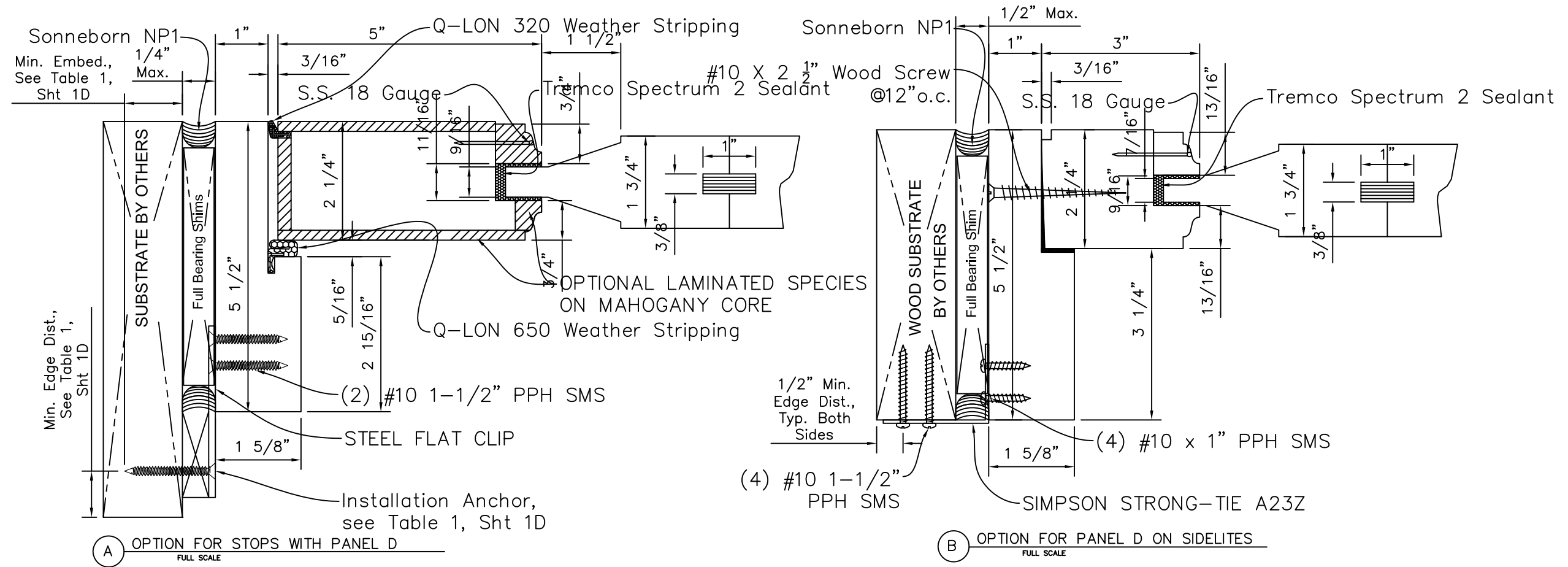
OWW LLC
3001 Tuxedo Ave., West Palm Beach, FL 33405
Ph. 561-478-7233 Fax 561-478-7858

Product: WOOD & WOOD CLAD MAHOGANY OUTSWING GLAZED & SOLID DOORS, SIDELITE & TRANSOM

Date: 12-18-13
Scale: 1/4" = 1'-0"
Drawn: JDS

Dwg: 1000-Door
FL30774.1

Sheet No.
7D OF 15



FOR PANEL TYPES SEE SHEET 1D

LUCAS A. TURNER
LICENSE
No. 58201
STATE OF FLORIDA
PROFESSIONAL ENGINEER

10/18/2023

TE&C
LUCAS A. TURNER, P.E. FL PE 58201
TURNER ENGINEERING & CONSULTING, INC.
PH. 941-380-1574
2428 OLD MATCHEZ TRACE TRAIL
CAMDEN, TN 38320

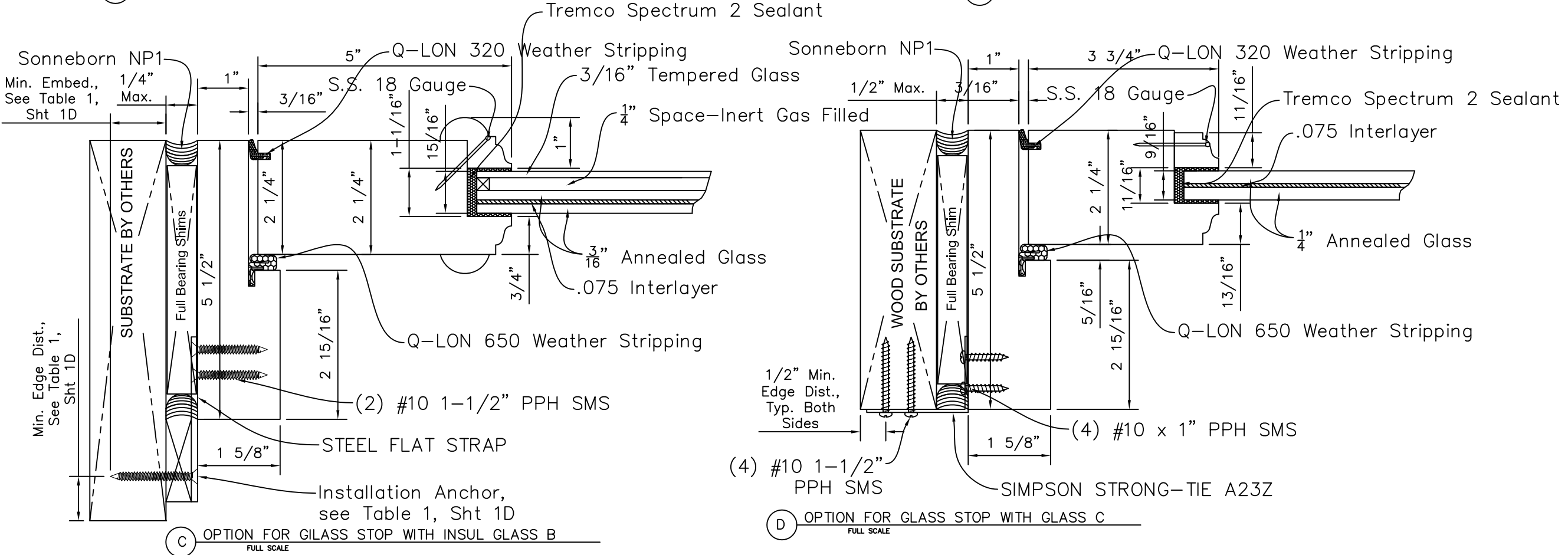
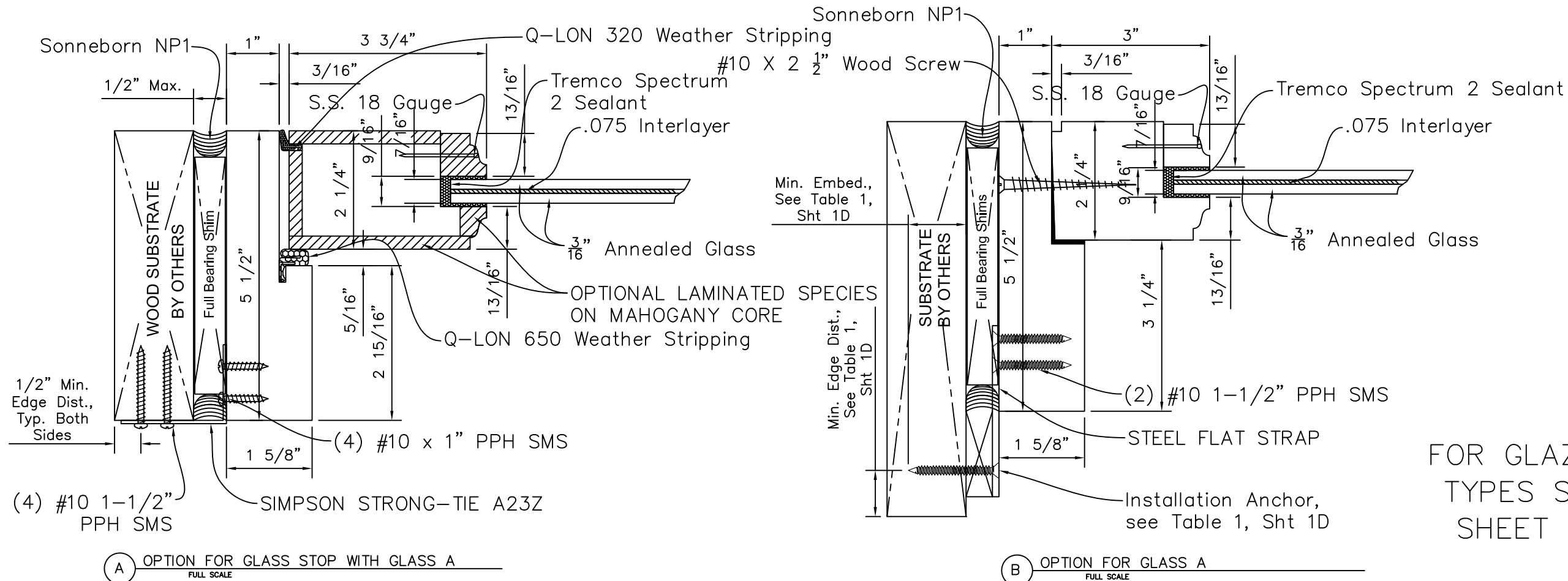
OWW LLC
3001 Tuxedo Ave., West Palm Beach, FL 33405
Ph. 561-478-7233 Fax 561-478-7858

Product: WOOD & WOOD CLAD MAHOGANY OUTSWING GLAZED & SOLID DOORS, SIDELITE & TRANSOM
Date: 12-18-13
Scale: 1/0" = 1/0"
Drawn: JDS

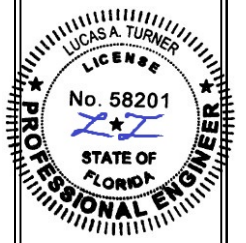
DOOR PANEL WOOD DETAIL
ALTERNATIVE ATTACHMENT

Dwg: 1000-Door
FL30774.1

Sheet No.
8D OF 15



FOR GLAZING
TYPES SEE
SHEET 1D



10/18/2023

TE&C
LUCAS A. TURNER, P.E. FL PE 58201
TURNER ENGINEERING & CONSULTING, INC.
PH. 941-380-1574
2428 OLD MATCHEZ TRACE TRAIL
CAMDEN, TN 38320

OWW LLC
3001 Tuxedo Ave., West Palm Beach, FL 33405
Ph. 561-478-7233 Fax 561-478-7858

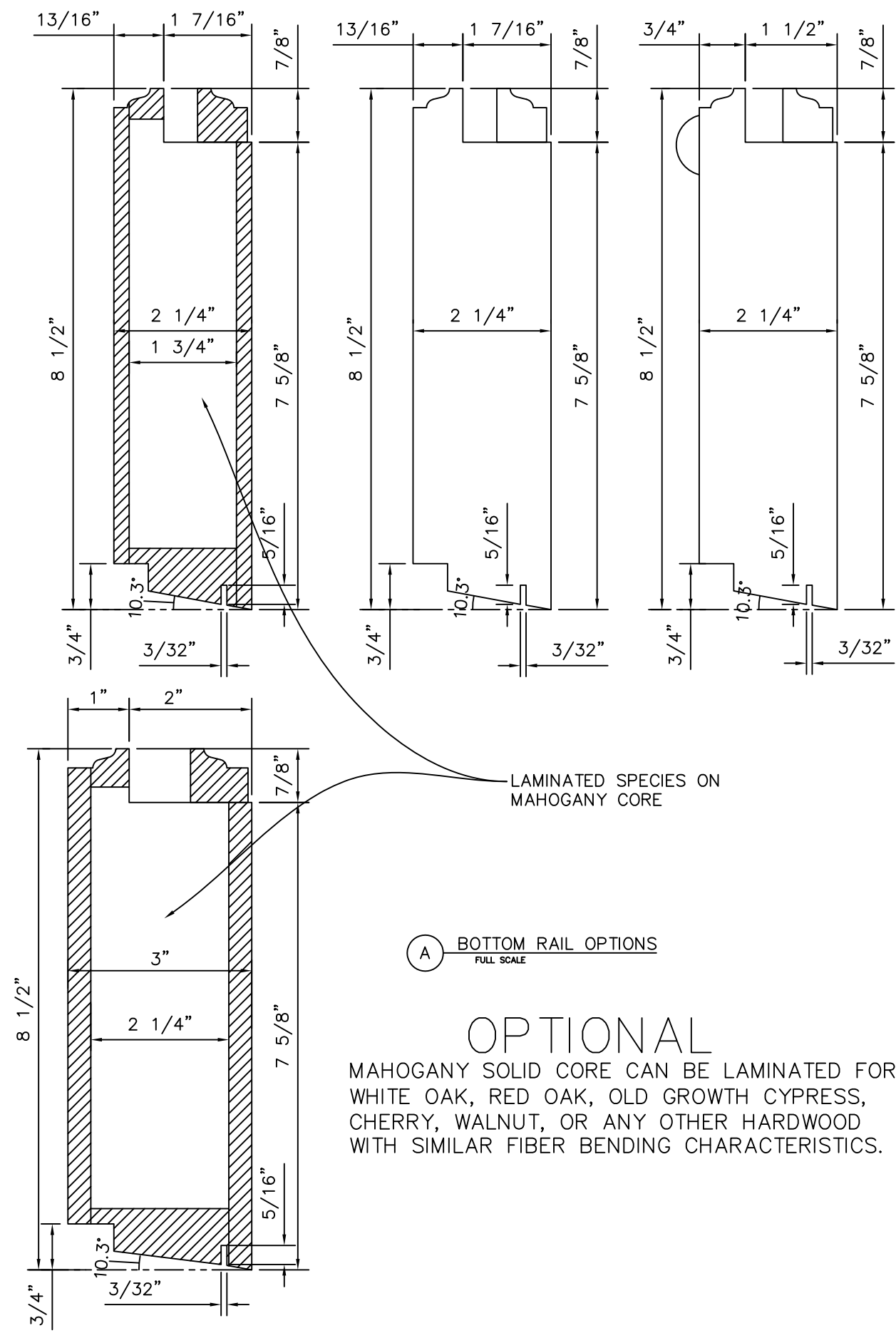
Product:
WOOD & WOOD CLAD MAHOGANY OUTSWING GLAZED
& SOLID DOORS, SIDELITE & TRANSOM

Date: 12-18-13
Scale: 1"0" = 1'0"
Drawn: JDS

Dwg: 1000-Door
FL30774.1

Sheet No.
9D OF 15

DOOR GLASS PANEL DETAIL
ALTERNATIVE ATTACHMENT



(A) BOTTOM RAIL OPTIONS
FULL SCALE

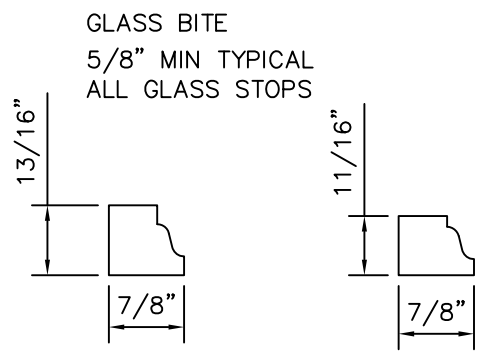
(B) COMMON TOP RAIL AND STILES
FULL SCALE

(C) GLASS STOP
FULL SCALE

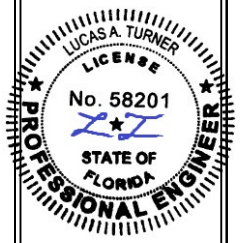
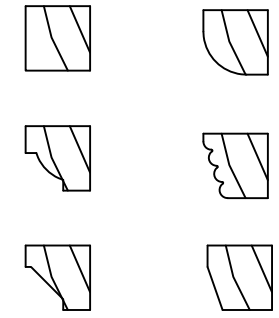
(D) OPTIONAL GLASS STOPS FOR INSUL GLASS PANELS
FULL SCALE

OPTIONAL
MAHOGANY SOLID CORE CAN BE LAMINATED FOR
WHITE OAK, RED OAK, OLD GROWTH CYPRESS,
CHERRY, WALNUT, OR ANY OTHER HARDWOOD
WITH SIMILAR FIBER BENDING CHARACTERISTICS.

FOR GLAZING TYPES SEE SHEET 1D



SASH AND BEAD PROFILES CAN BE
CUSTOMIZED PER MANUFACTUER OR
CUSTOMER'S OPTION.
SUCH AS (BUT NOT LIMITED TO):



10/18/2023

TE&C
LUCAS A. TURNER, P.E. FL PE 58201
TURNER ENGINEERING & CONSULTING, INC.
PH. 941-380-1574
2428 OLD MATCHEZ TRACE TRAIL
CAMDEN, TN 38320

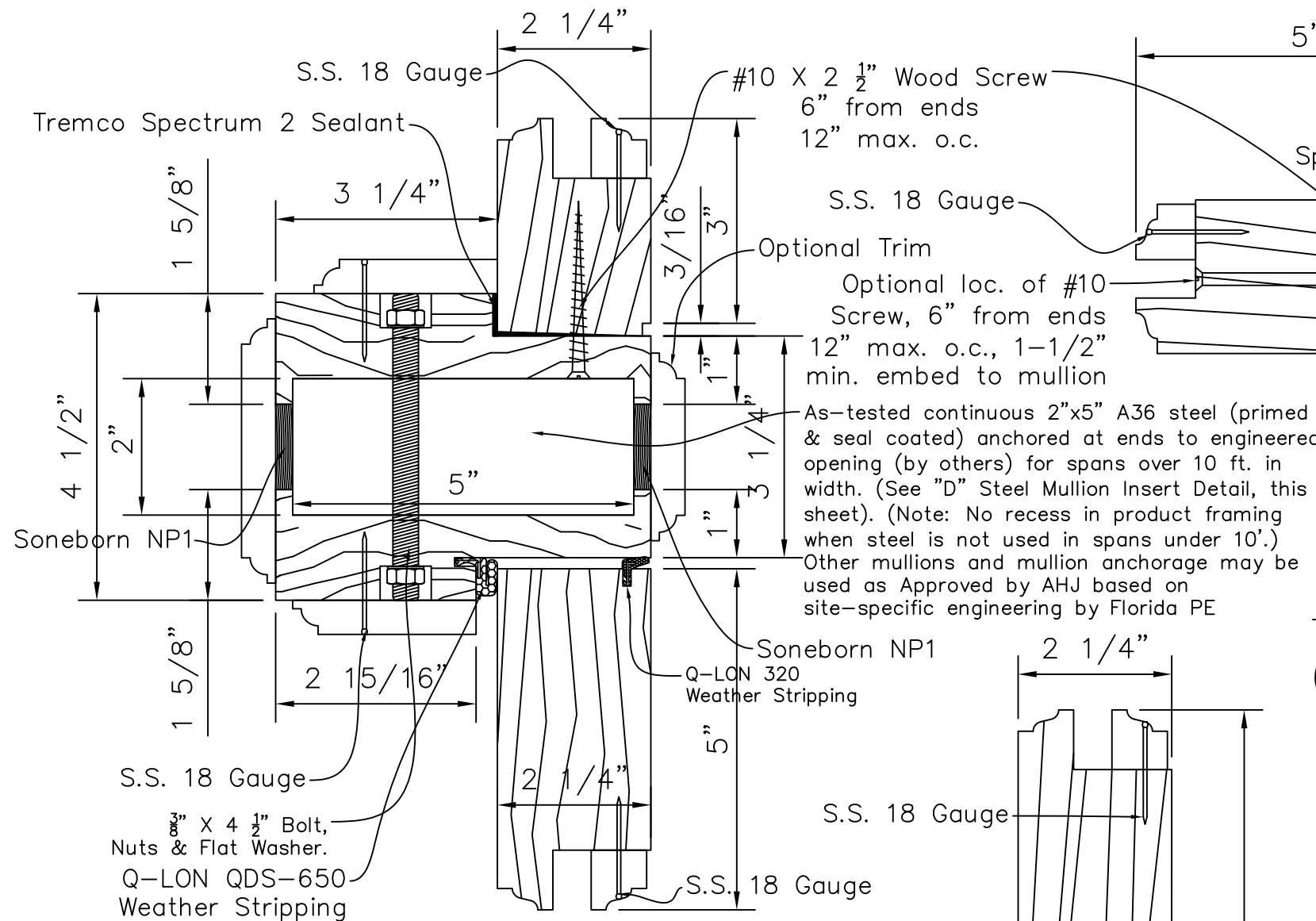
OWW LLC
3001 Tuxedo Ave., West Palm Beach, FL 33405
Ph. 561-478-7233 Fax 561-478-7858

Product: WOOD & WOOD CLAD MAHOGANY OUTSWING GLAZED
& SOLID DOORS, SIDELITE & TRANSOM

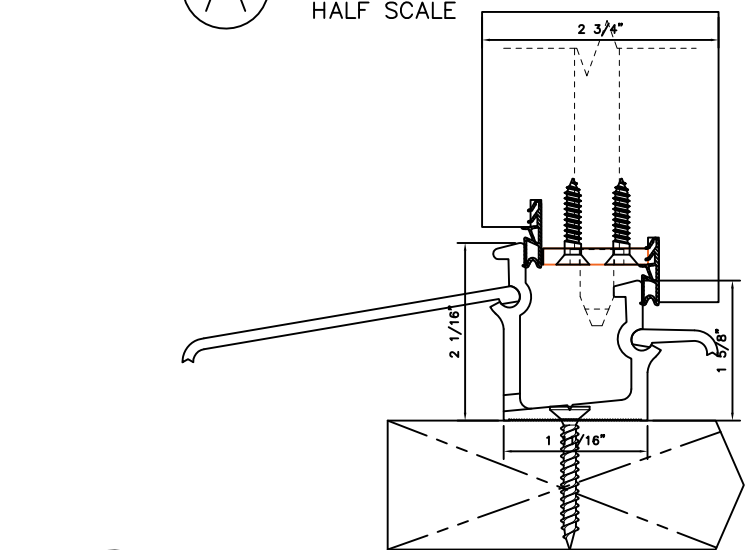
Date: 12-18-13
Scale: 1"0" = 1'0"
Drawn: JDS
COMMON DOOR PARTS

Dwg: 1000-Door
FL30774.1

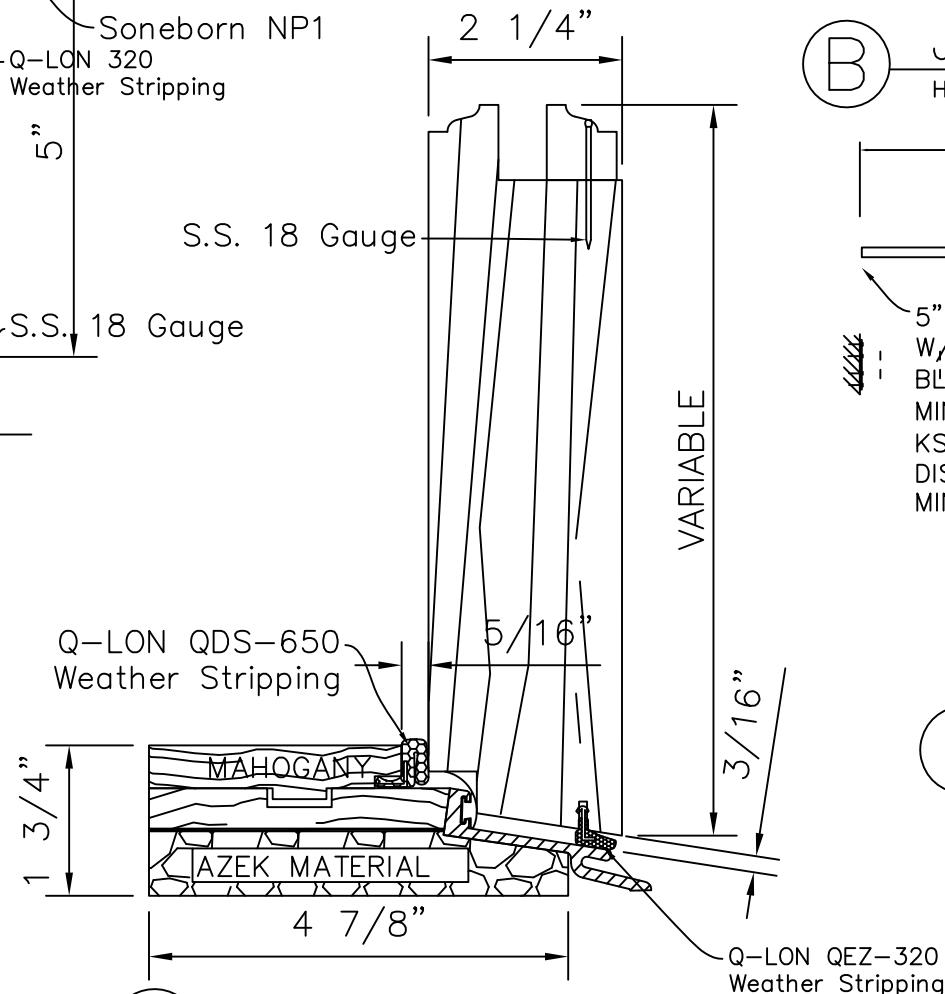
Sheet No.
10D OF 15



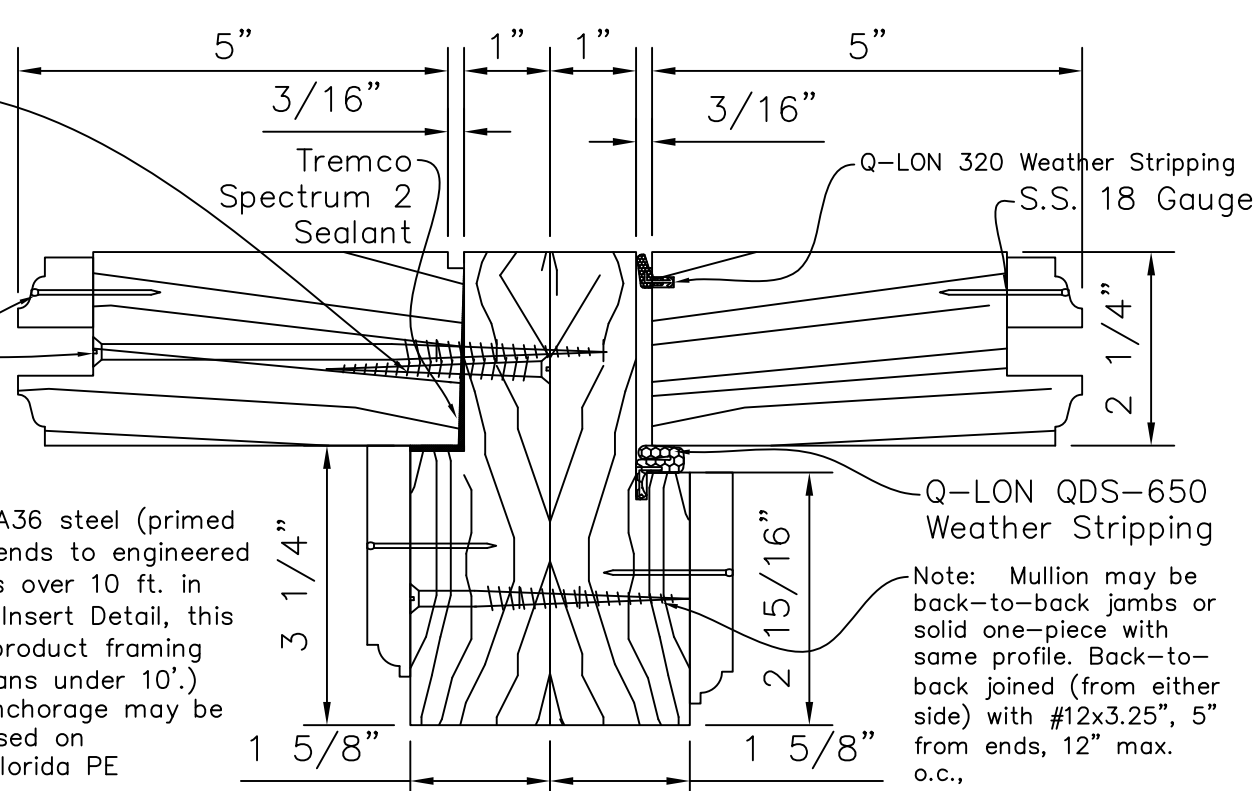
(A) JAMB & HEAD DETAIL
HALF SCALE



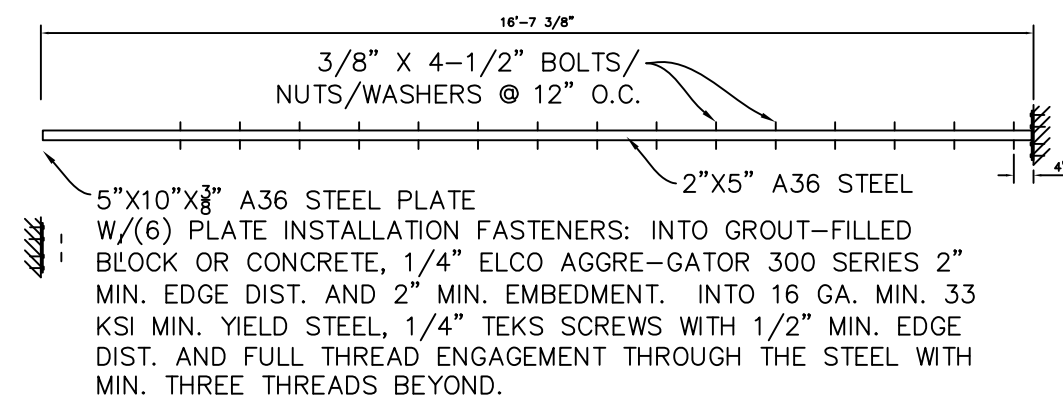
(E) INSWING THRESHOLD DETAILS
HALF SCALE



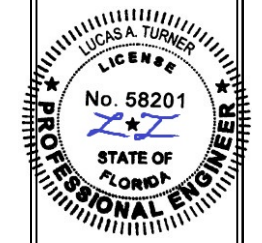
(C) BOTTOM RAIL DETAIL
HALF SCALE



(B) JAMB & JAMB MULLION DETAIL
HALF SCALE



(D) STEEL MULLION INSERT DETAIL
NOT TO SCALE



10/18/2023

TE&C
LUCAS A. TURNER, P.E. FL PE 58201
TURNER ENGINEERING & CONSULTING, INC.
PH. 941-380-1574
2428 OLD MATCHEZ TRACE TRAIL
CAMDEN, TN 38320

OWW LLC
3001 Tuxedo Ave., West Palm Beach, FL 33405
Ph. 561-478-7233 Fax 561-478-7858

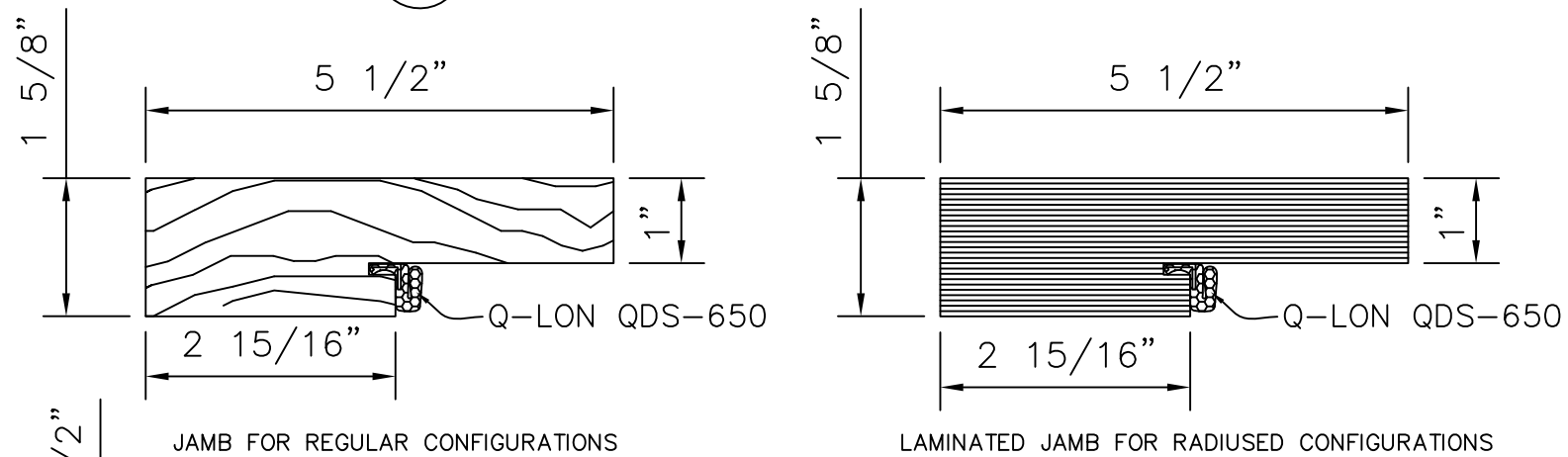
Product: WOOD & WOOD CLAD MAHOGANY OUTSWING GLAZED & SOLID DOORS, SIDELITE & TRANSOM

Date: 12-18-13
Scale: AS NOTED
Drawn: JDS

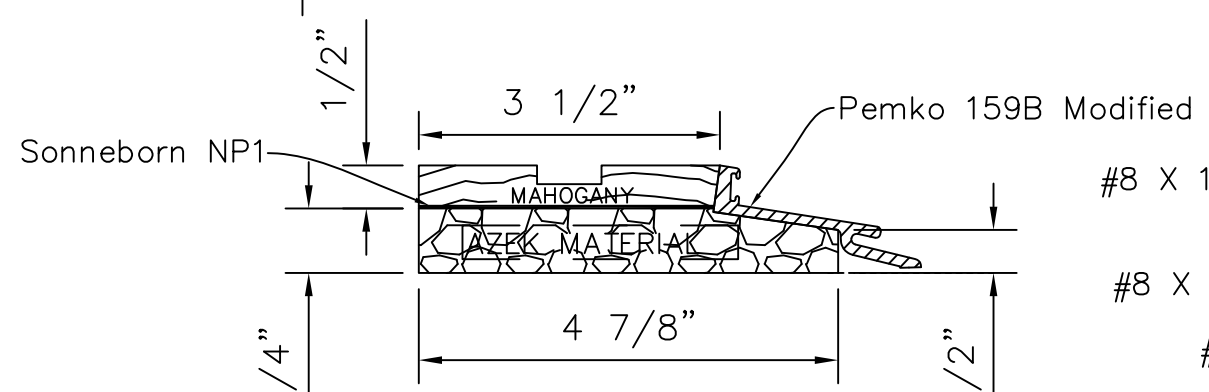
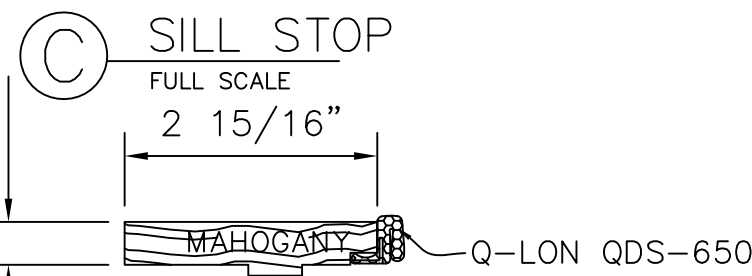
Dwg: 1000-Door
FL30774.1

Sheet No.
11D OF 15

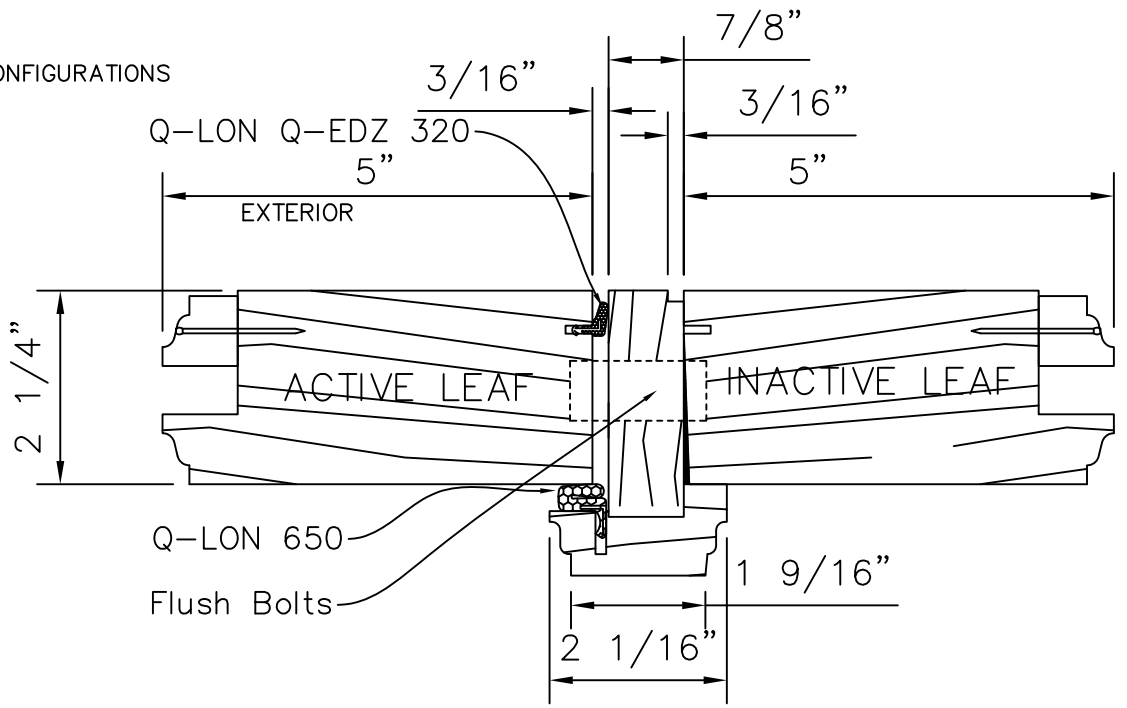
(A) JAMB & HEAD DETAIL
FULL SCALE



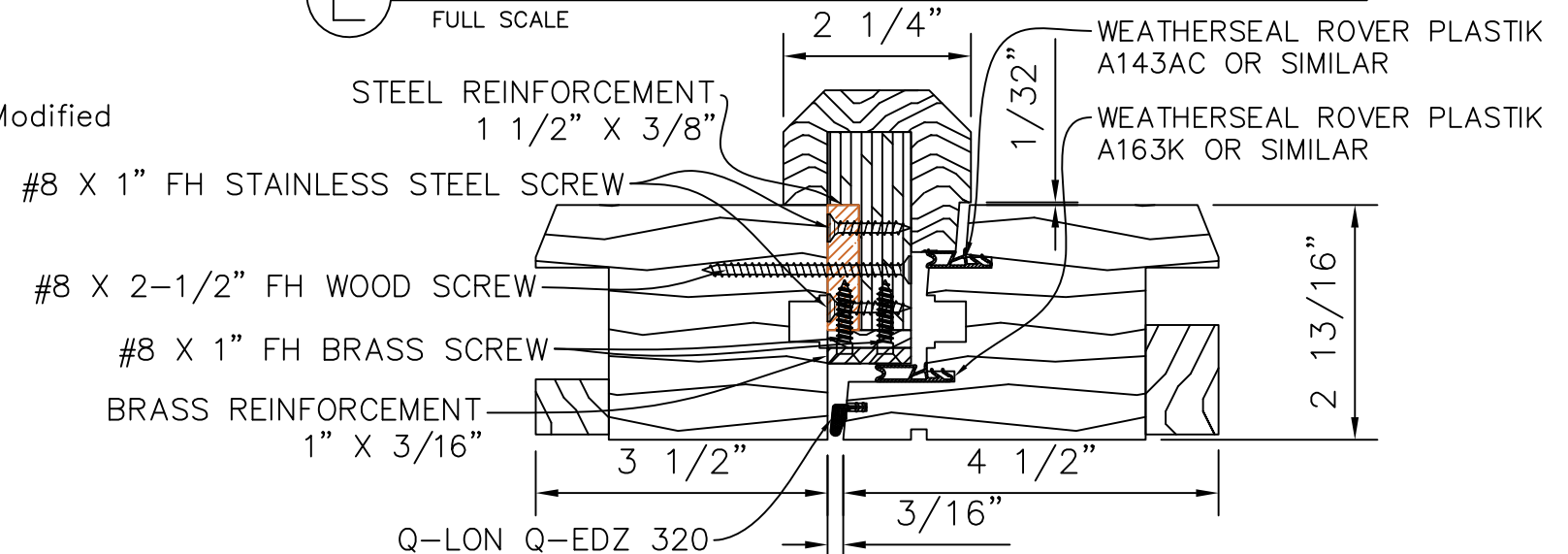
(B) HEAD & SIDE SCREW COVERS
FULL SCALE / NON STRUCTURAL



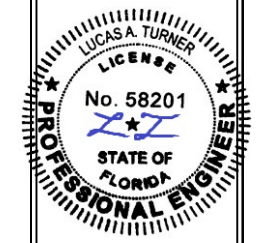
(D) SILL DETAIL
FULL SCALE



(E) OUTSWING STILE & ASTRAGAL DETAILS
FULL SCALE



(F) INSWING STILE & ASTRAGAL DETAILS
FULL SCALE



10/18/2023

TE&C
LUCAS A. TURNER, P.E. FL PE 58201
TURNER ENGINEERING & CONSULTING, INC.
PH. 941-380-1574
2428 OLD MATCHEZ TRACE TRAIL
CAMDEN, TN 38320

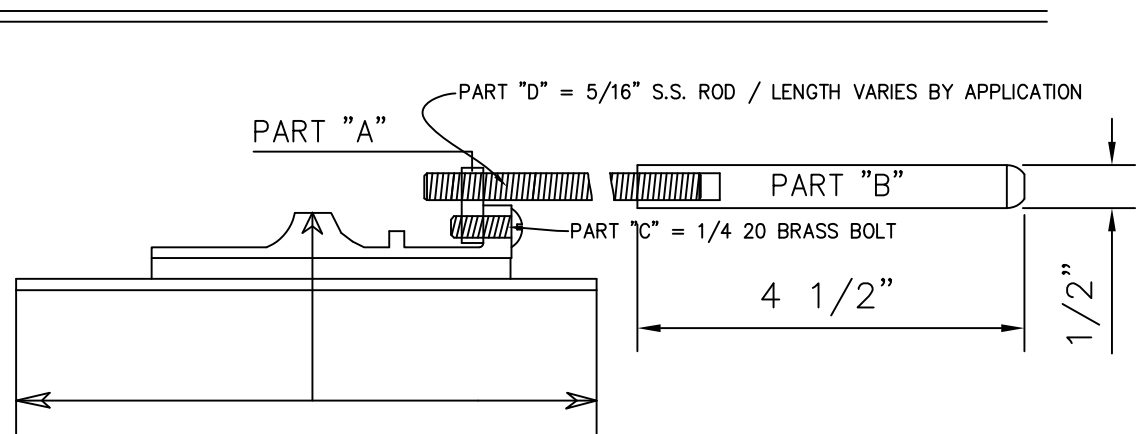
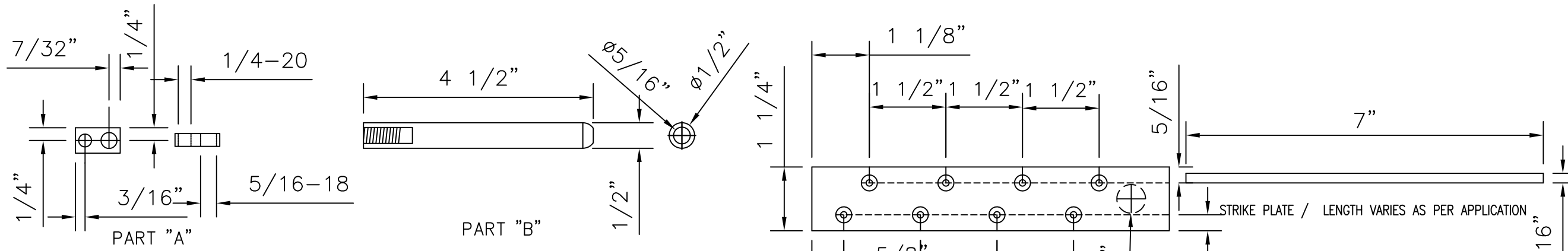
OWW LLC
3001 Tuxedo Ave., West Palm Beach, FL 33405
Ph. 561-478-7233 Fax 561-478-7858

Product: WOOD & WOOD CLAD MAHOGANY OUTSWING GLAZED & SOLID DOORS, SIDELITE & TRANSOM

DOOR DETAILS
Date: 12-18-13
Scale: AS NOTED
Drawn: JDS

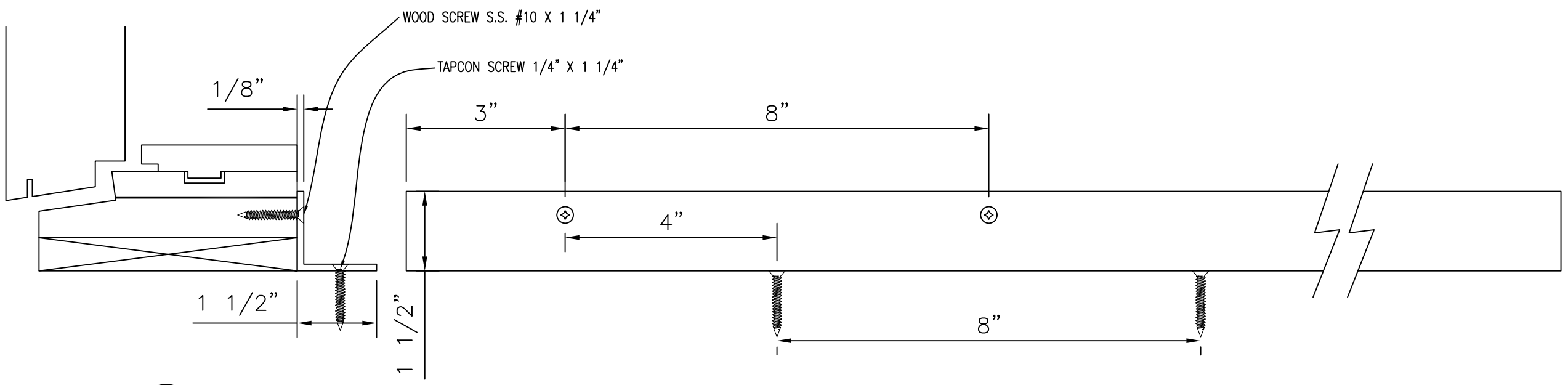
Dwg: 1000-Door
FL30774.1

Sheet No.
12D OF 15

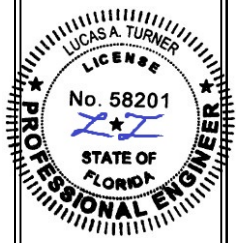


(A) Standard Baldwin Flush Bolt or Equal

(B) Strike Plate for Flush Bolt



(C) Detail for Optional Aluminium L Angle Attachment-anchorage



10/18/2023

TE&C
LUCAS A. TURNER, P.E. FL PE 58201
TURNER ENGINEERING & CONSULTING, INC.
PH. 941-380-1574
2428 OLD MATCHEZ TRACE TRAIL
CAMDEN, TN 38320

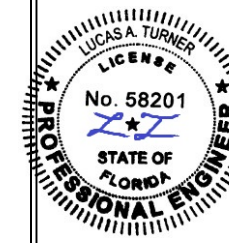
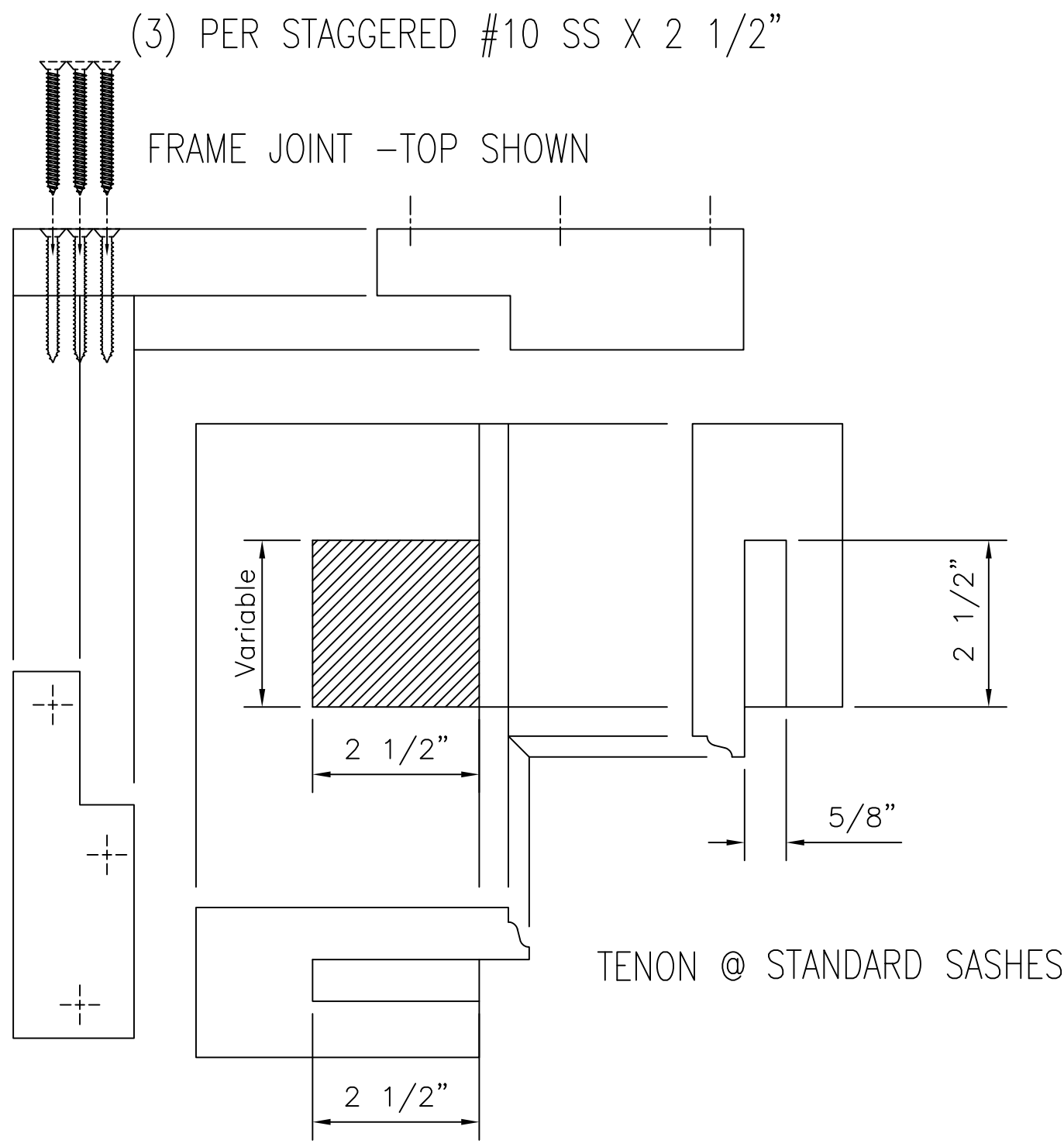
OWW LLC
3001 Tuxedo Ave., West Palm Beach, FL 33405
Ph. 561-478-7233 Fax 561-478-7858

Product: WOOD & WOOD CLAD MAHOGANY OUTSWING GLAZED & SOLID DOORS, SIDELITE & TRANSOM

Date: 12-18-13
Scale: 1'0" = 1'0"
Drawn: JDS
FLUSH BOLT HARDWARE

Dwg: 1000-Door
FL30774.1

Sheet No.
13D OF 15



10/18/2023

TE&C
 LUCAS A. TURNER, P.E. FL PE 58201
 TURNER ENGINEERING & CONSULTING, INC.
 PH. 941-380-1574
 2428 OLD NACHEZ TRACE TRAIL
 CAMDEN, TN 38320

OWW LLC
 3001 Tuxedo Ave., West Palm Beach, FL 33405
 Ph. 561-478-7233 Fax 561-478-7858

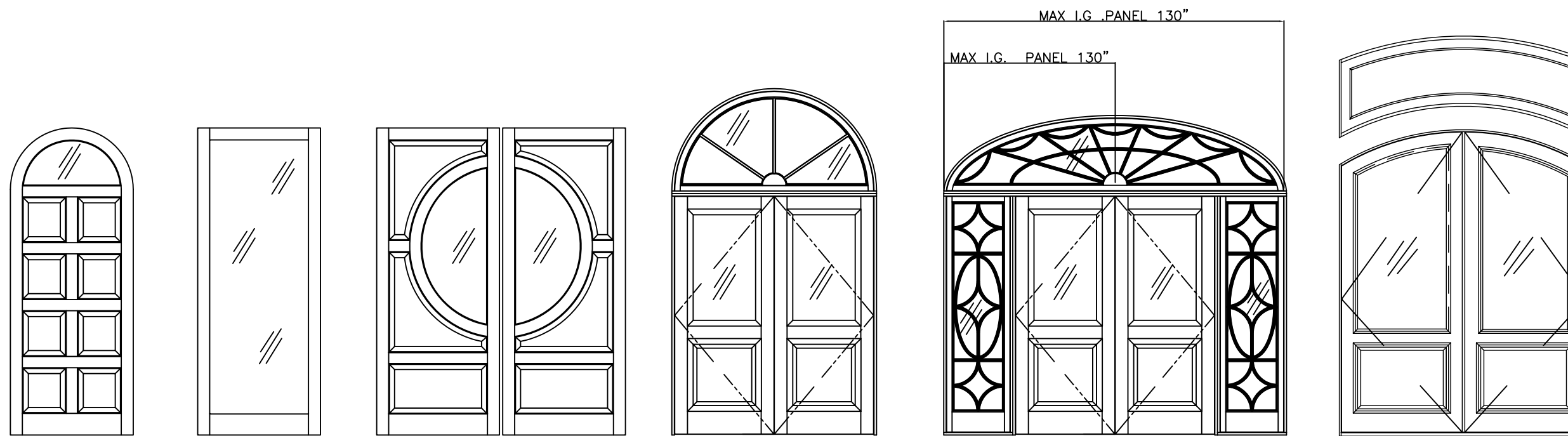
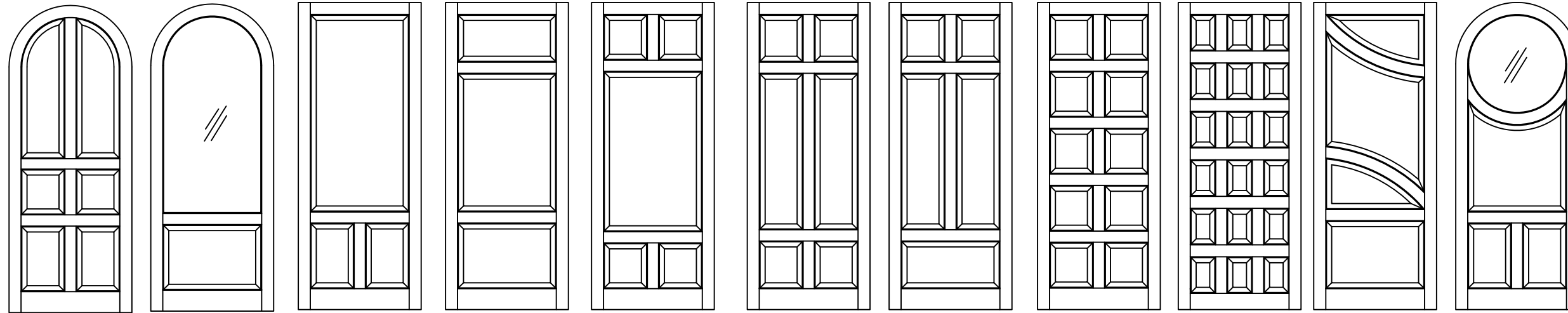
Product: WOOD & WOOD CLAD MAHOGANY OUTSWING GLAZED
 & SOLID DOORS, SIDELITE & TRANSOM

Date: 12-18-13
 Scale: 1'0" = 1'0"
 Drawn: JDS

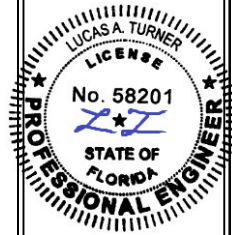
FRAME AND SASH JOINT

Dwg: 1000-Door
 FL30774.1

Sheet No.
 14D OF 15



MORE SAMPLES OF POSSIBLE, BUT NOT LIMITED TO, UNIT CONFIGURATIONS
 (INDIVIDUAL UNIT SIZES NOT TO EXCEED TESTED SIZES)



10/18/2023

TE&C
 LUCAS A. TURNER, P.E. FL PE 58201
 TURNER ENGINEERING & CONSULTING, INC.
 PH. 941-380-1574
 2428 OLD NATCHEZ TRACE TRAIL
 CAMDEN, TN 38320

OWW LLC
 3001 Tuxedo Ave., West Palm Beach, FL 33405
 Ph. 561-478-7233 Fax. 561-478-7858

Product: WOOD & WOOD CLAD MAHOGANY OUTSWING GLAZED
 & SOLID DOORS, SIDELITE & TRANSOM

Date: 12-18-13
 Scale: None
 Drawn: JDS

DOOR CONFIGURATION OPTIONS

Dwg: 1000-Door
 FL30774.1

Sheet No.
 15D OF 15