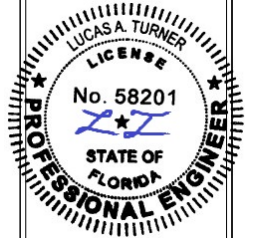
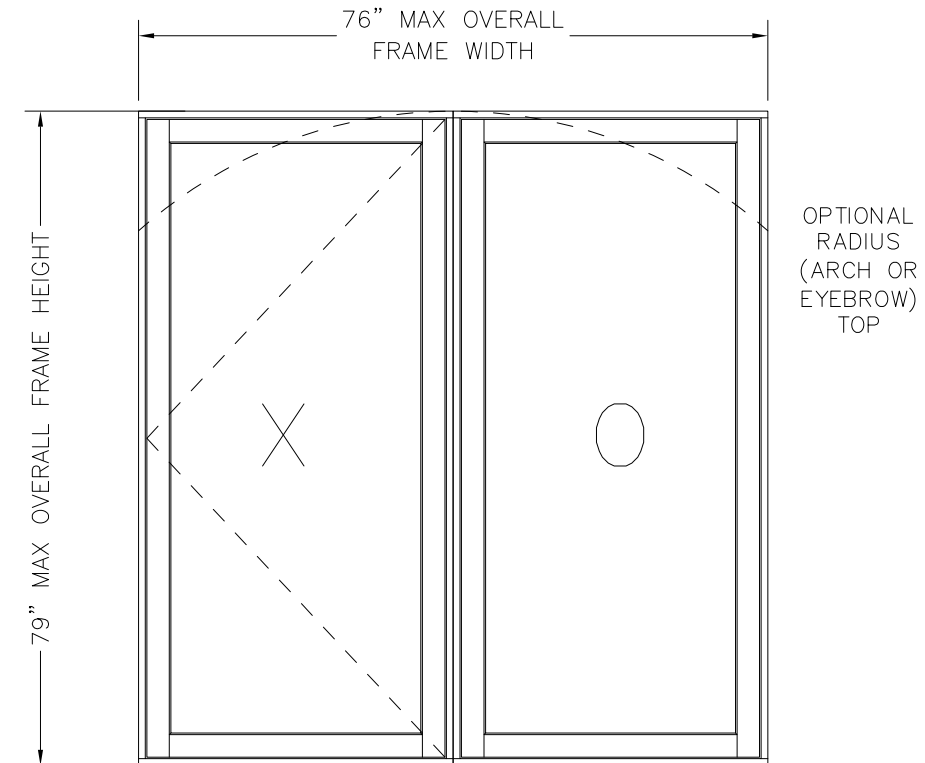


TWIN CASEMENT WINDOW – OUTSWING – "IMPACT"
BY OWW LLC

DESIGN PRESSURE = + 75.0 PSF, - 75.0 PSF

GENERAL NOTES

1. This product has been evaluated and is in compliance with 8th Edition (2023) Florida Building Code (FBC) structural requirements including the "High Velocity Hurricane Zone" (HVHZ).
2. Product anchors shall be as listed and spaced as shown on details. Anchor embedment to base materials shall be beyond wall dressing or stucco. All anchors used shall be of a material or have a coating compatible with pressure treated wood if used, and all other window materials.
3. When used in the "HVHZ" this product complies with Section 1626 of the FBC and does not require an impact resistant covering.
4. The opening substrate materials (framing, masonry, bucks) are by others and must be properly designed and installed to transfer superimposed loads to the structure. For 2X stud framing construction, anchoring of these units shall be the same as that shown for 2X buck masonry construction. Wood bucks over masonry, if used, shall be pressure treated, with either a treatment or coating compatible with this product and anchors.
5. All window frame wood to be Specific Gravity = 0.50 min. (Mahogany or similar).
6. Site conditions that deviate from the details of this drawing require further engineering analysis by a licensed engineer or registered architect.
7. This product has been laboratory tested to meet the water infiltration requirements for "HVHZ." Sealing and flashing strategies for overall water infiltration resistance of the field-installed product shall be the responsibility of others and are not addressed by this document.



10/18/2023

TE&C
LUCAS A. TURNER, P.E. FL PE 58201
TURNER ENGINEERING & CONSULTING, INC.
PH. 941-380-1574
2428 OLD NATCHEZ TRACE TRAIL
CAMDEN, TN 38320

OWW LLC
3001 Tuxedo Ave., West Palm Beach, Fl. 33405
Ph. 561-478-7233 Fax 561-478-7858

Product: TWIN OUTSWING CASEMENT WINDOWS

TYPICAL ELEVATION, DESIGN PRESSURES & GENERAL NOTES

Date: 10-05-15
Scale: None
Drawn: JDS

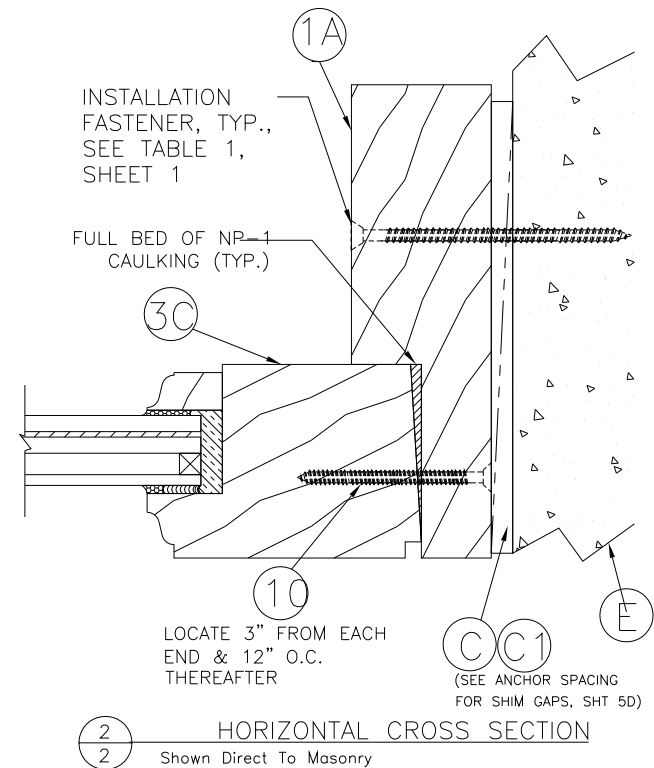
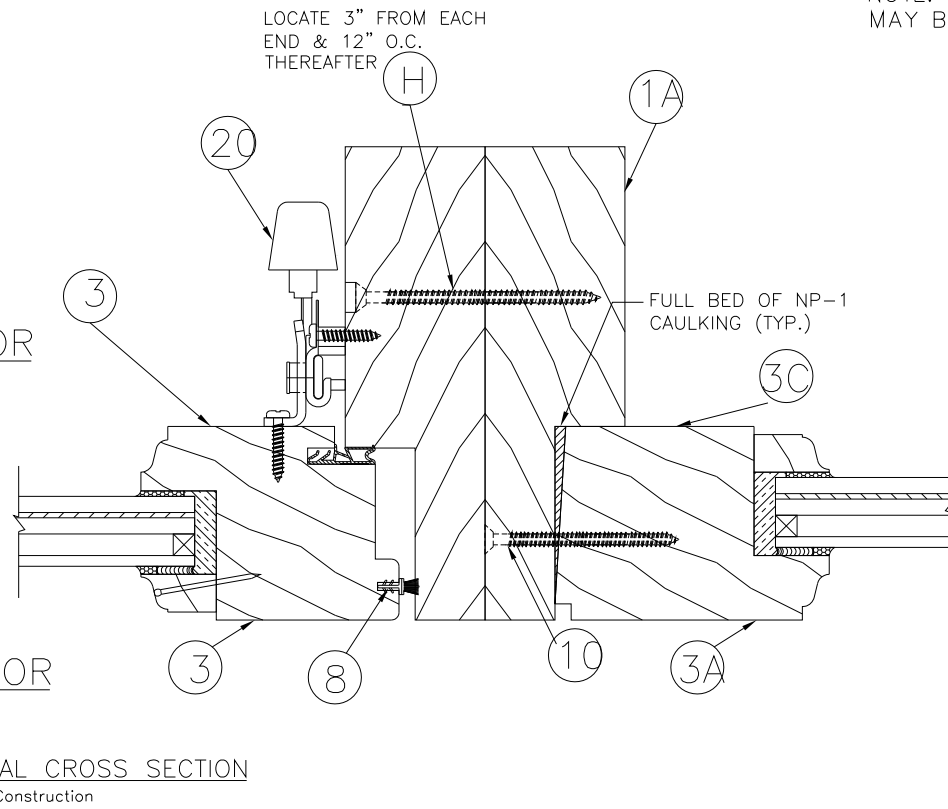
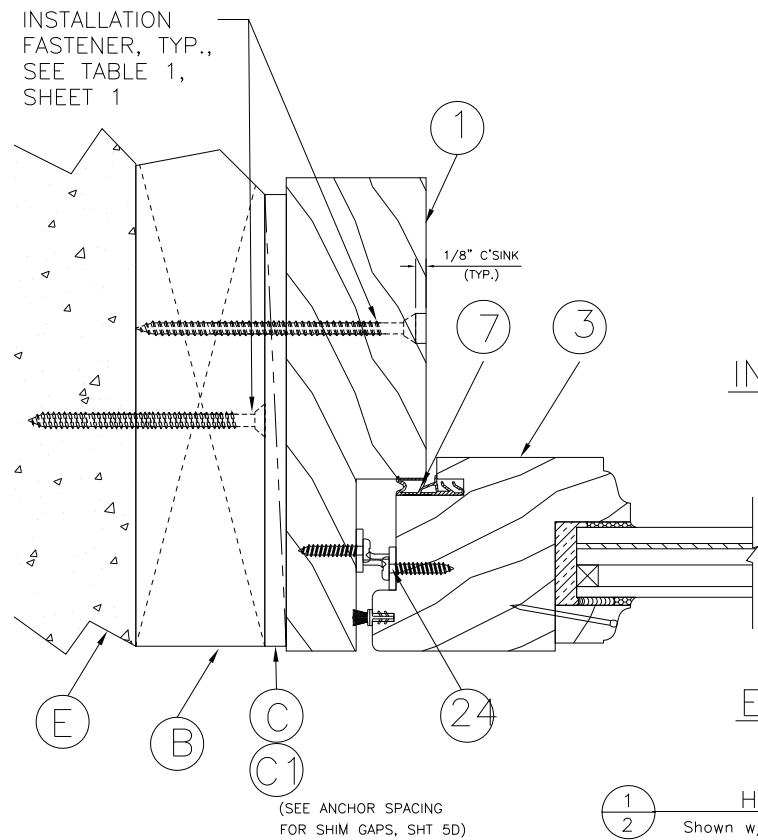
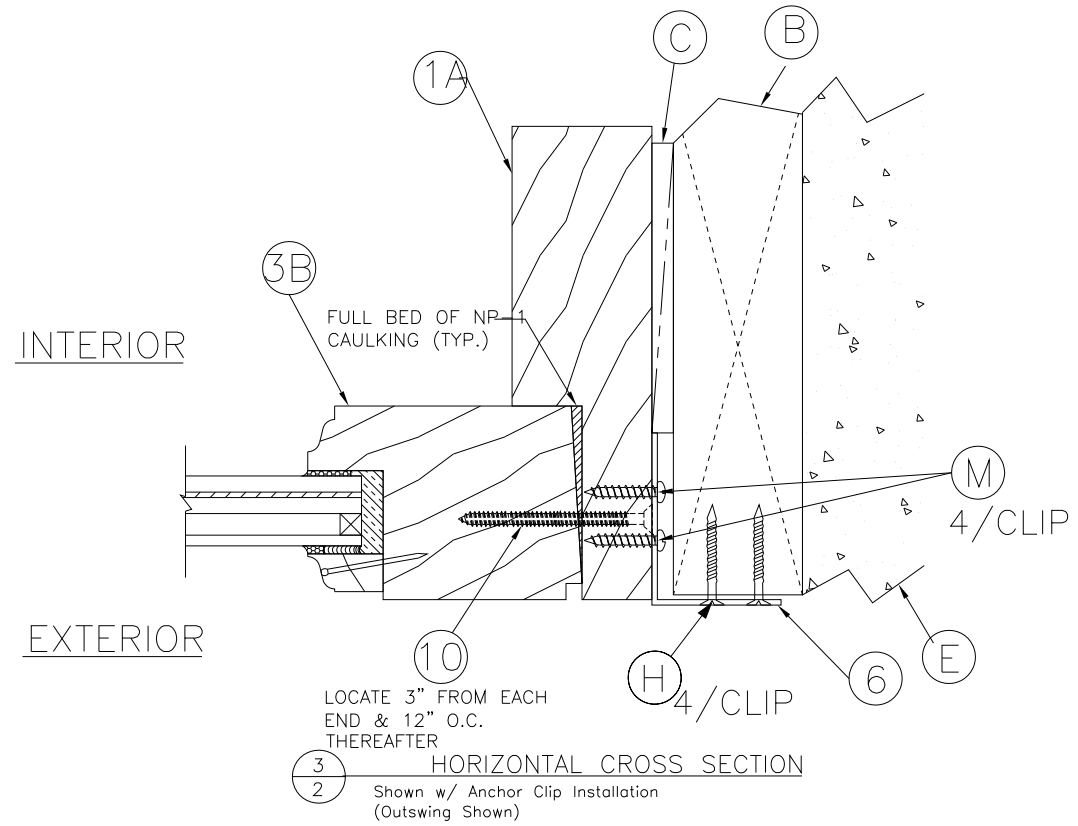
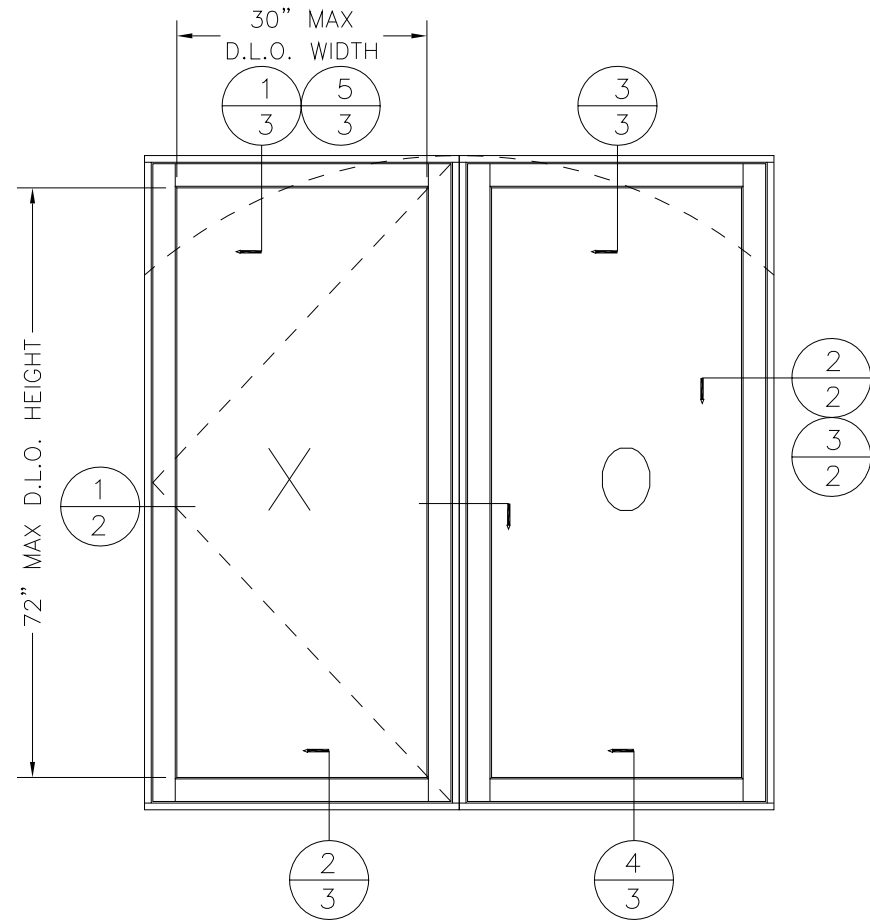
Dwg: CA-0X-0S
FL34942.3
Sheet No. 1D OF 6

TABLE OF CONTENTS

SHEET #	DESCRIPTION
1	Typical elevation, design pressures & general notes
2	Horizontal cross sections
3	Vertical cross sections
4	Hardware details & glass builds
5	Buck and frame anchoring
6	Bill of materials, components & glazing details

TABLE 1. QUALIFIED ANCHOR INFORMATION

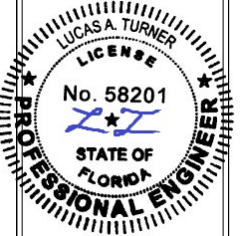
ID	SUBSTRATE	ANCHOR	MIN. EMBEDMENT	MIN. EDGE DISTANCE
A	SOLID UNCRACKED CONCRETE (3050 PSI MIN.)	1/4" DEWALT COATED CARBON STEEL ULTRACON+	1 3/8"	1"
B	GROUT-FILLED CMU (ASTM C-90) (JAMBS ONLY)	1/4" DEWALT COATED CARBON STEEL ULTRACON+	1 3/4"	2 1/2"
C	SOLID UNCRACKED CONCRETE (2000 PSI MIN.)	1/4" ITW COATED CARBON STEEL TAPCON W/ ADVANCED THREADFORM	1 1/2"	1 1/2"
D	HOLLOW CMU (117 PCF MIN.) (JAMBS ONLY)	1/4" ITW COATED CARBON STEEL TAPCON W/ ADVANCED THREADFORM	1"	2"
E	CONCRETE (3000 PSI MIN)	1/4" HILTI COATED CARBON STEEL KWIK-CON+	1"	2 1/2"
F	HOLLOW OR GROUT-FILLED CMU (ASTM C-90) (JAMBS ONLY)	1/4" HILTI COATED CARBON STEEL KWIK-CON+	1"	2 1/2"
G	2x MIN. SOUTHERN PINE WOOD (G=0.55 MIN)	#12 GRADE 5 WOOD SCREW	1 1/2"	1"
H	16 GAUGE (0.060") MIN. STEEL STUD (33 KSI YIELD MIN.) OR 1/8" MIN. ALUMINUM (6063-T5 MIN.)	#14 ITW TEKS SELF-DRILLING SCREW	FULL + 3 THREADS	1/2"



1 HORIZONTAL CROSS SECTION
2 Shown w/ 2X Buck Construction

2 HORIZONTAL CROSS SECTION
2 Shown Direct To Masonry

NOTE: GLAZING DETAIL A OR B MAY BE USED FOR ALL DETAILS



10/18/2023

TE&C
LUCAS A. TURNER, P.E. FL PE 58201
TURNER ENGINEERING & CONSULTING, INC.
PH. 941-380-1574
2428 OLD NATCHEZ TRACE TRAIL
CAMDEN, TN 38320

OWW LLC
3001 Tuxedo Ave., West Palm Beach, Fl. 33405
Ph. 561-478-7233 Fax 561-478-7868

Product: TWIN OUTSWING CASEMENT WINDOWS

HORIZONTAL CROSS SECTIONS

Date: 10-05-15

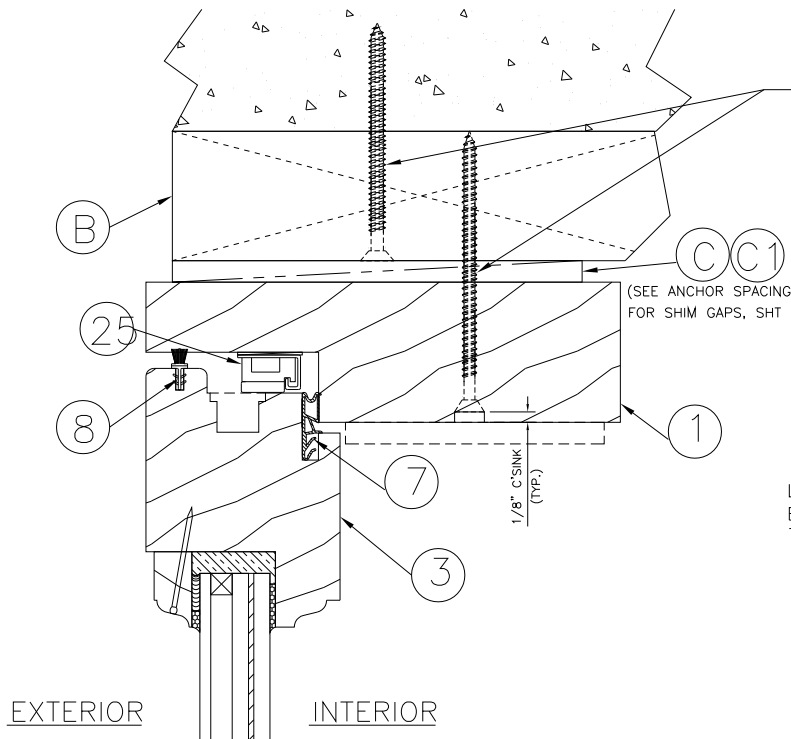
Scale: None

Drawn: JDS

Dwg: CA-OX-OS

FL34942.3

Sheet No.
2D OF 6

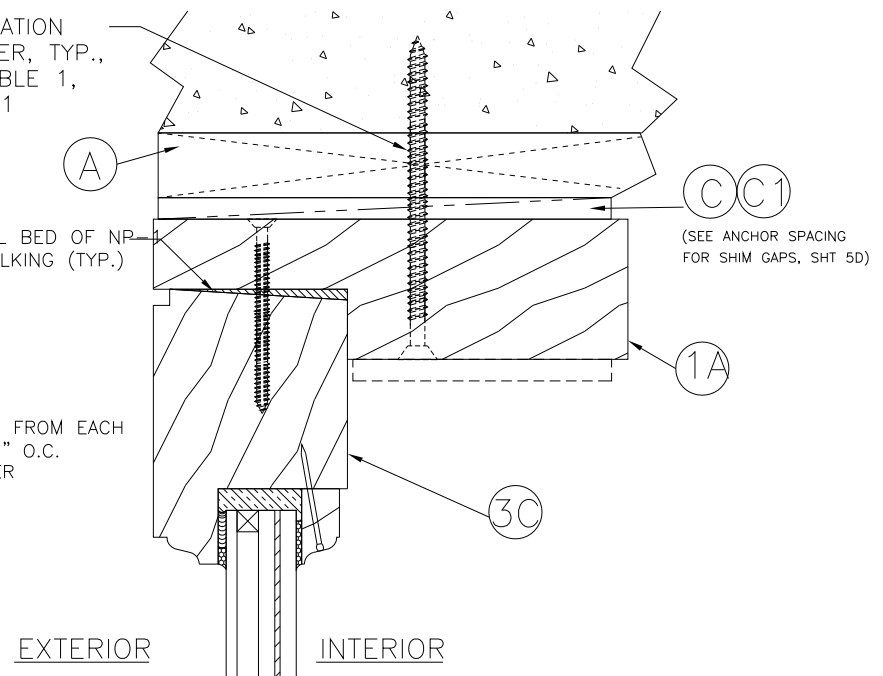


1
3 VERTICAL CROSS SECTION
Shown w/ 2X Buck Construction

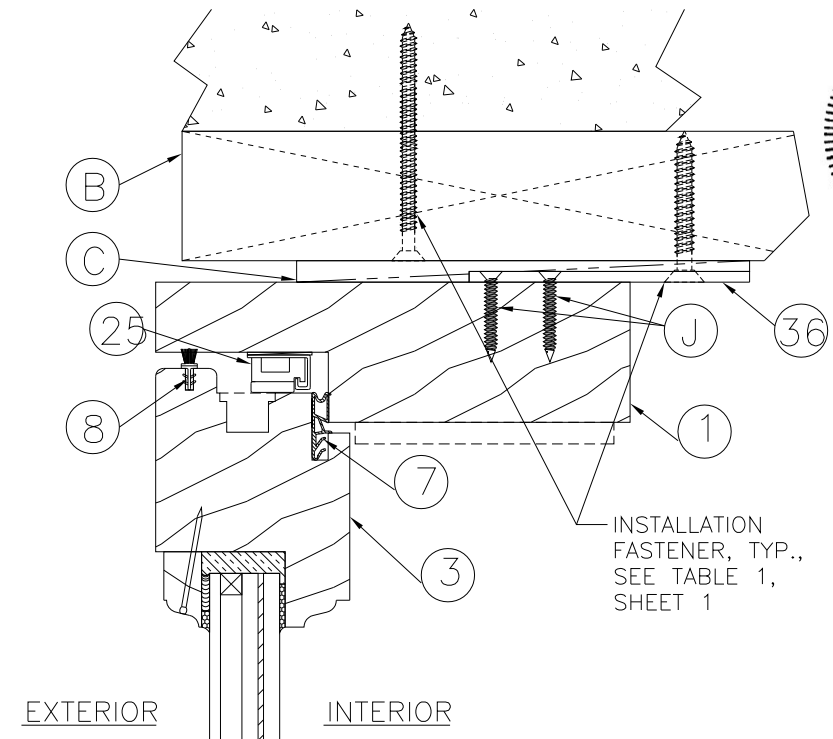
INSTALLATION FASTENER, TYP., SEE TABLE 1, SHEET 1

(SEE ANCHOR SPACING FOR SHIM GAPS, SHT 5D)

LOCATE 3" FROM EACH END & 12" O.C. THEREAFTER

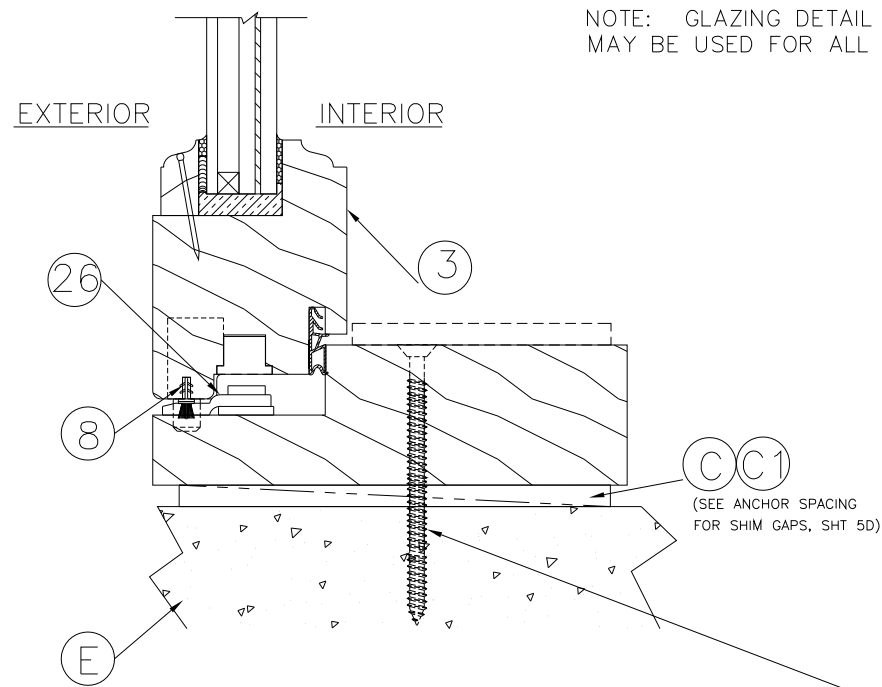


3
3 VERTICAL CROSS SECTION
Shown w/ 1X Buck Construction



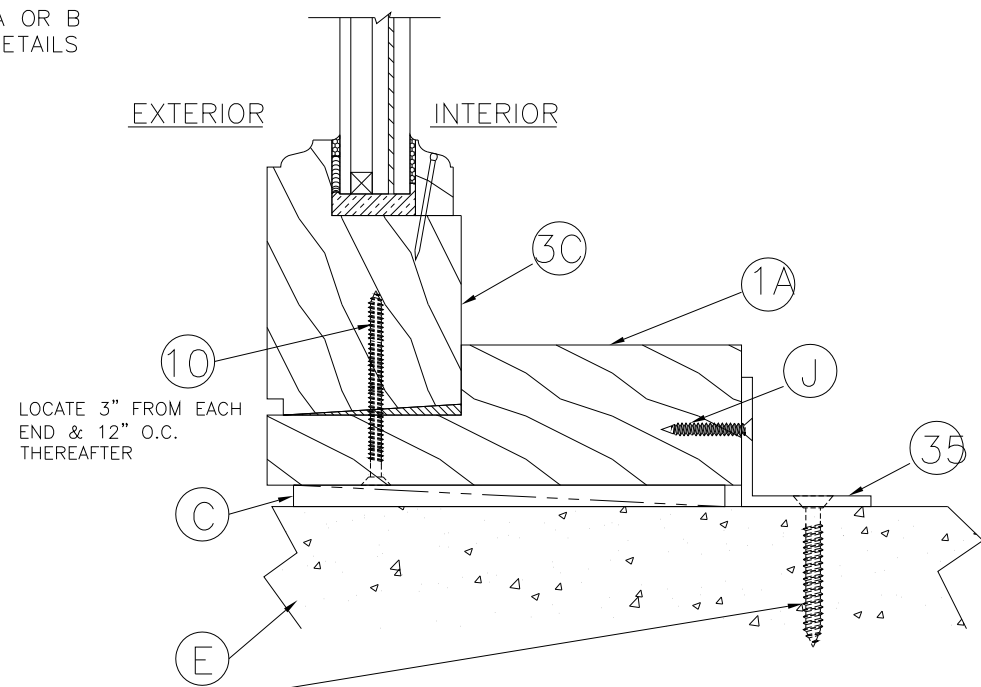
5
3 VERTICAL CROSS SECTION
Shown w/ 2X Buck Construction w/ Steel Strap Anchor

INSTALLATION FASTENER, TYP., SEE TABLE 1, SHEET 1

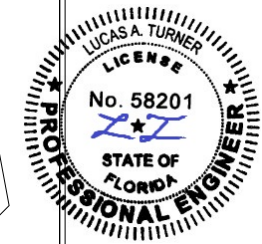


2
3 VERTICAL CROSS SECTION
Shown Direct To Masonry

NOTE: GLAZING DETAIL A OR B MAY BE USED FOR ALL DETAILS



4
3 VERTICAL CROSS SECTION
Shown Direct To Masonry w/ Aluminum Sill Anchor



10/18/2023

TE&C
LUCAS A. TURNER, P.E., FL PE 58201
TURNER ENGINEERING & CONSULTING, INC.
PH. 941-380-1574
2428 OLD NATCHEZ TRACE TRAIL
CAMDEN, TN 38320

OWW LLC
3001 Tuxedo Ave., West Palm Beach, FL 33405
Ph. 561-478-7233 Fax 561-478-7858

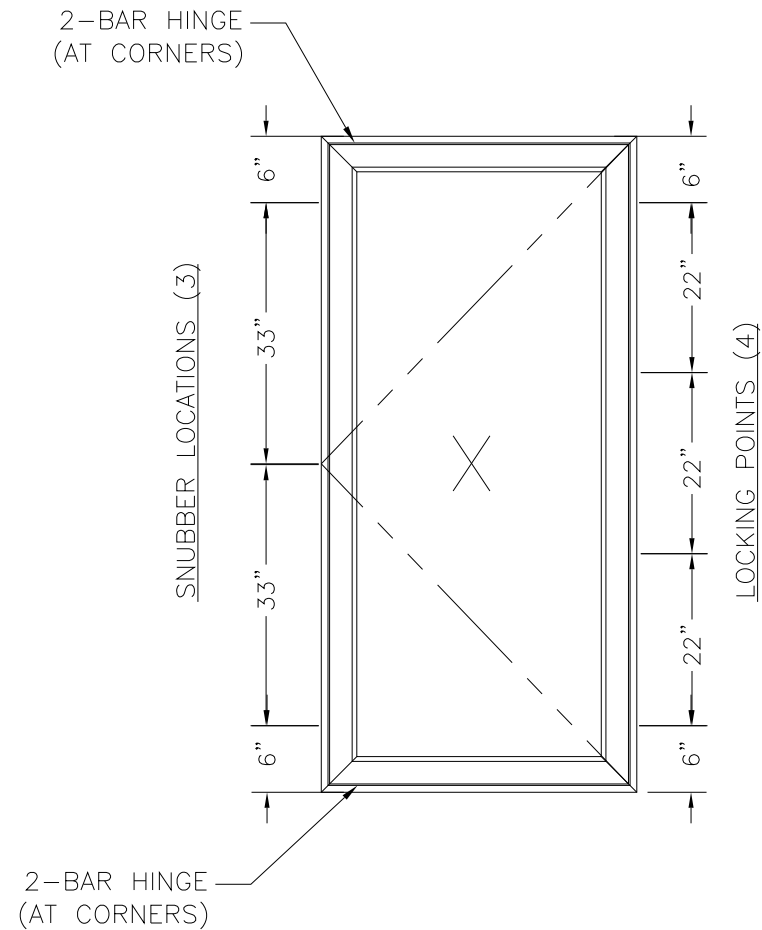
Product: TWIN OUTSWING CASEMENT WINDOWS

VERTICAL CROSS SECTIONS

Date: 10-05-15
Scale: None
Drawn: JDS

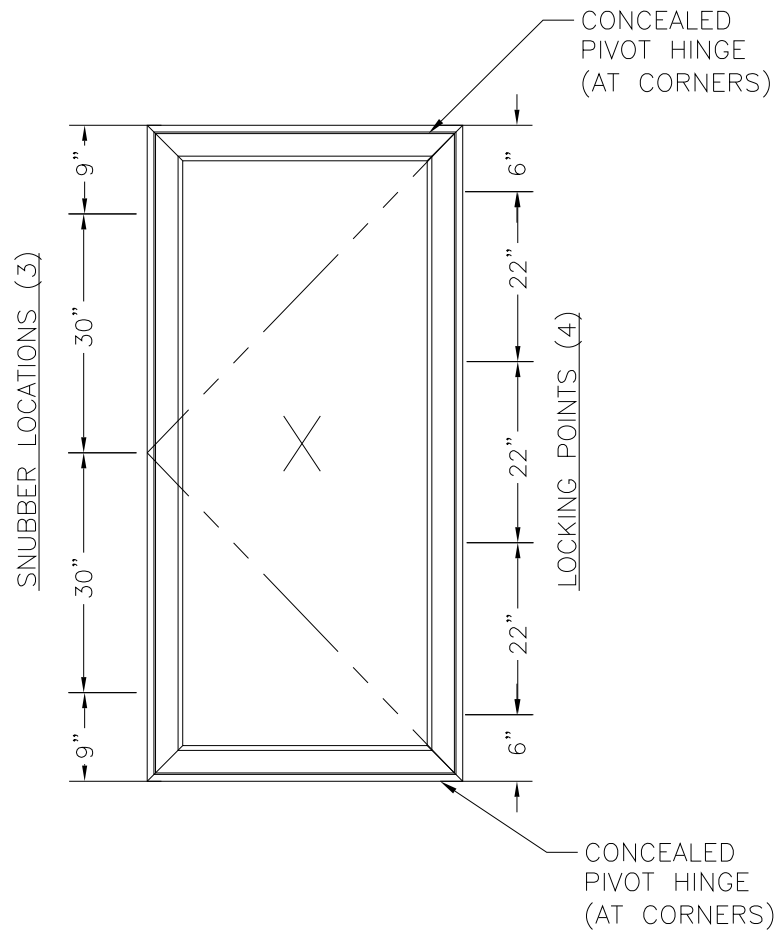
Dwg: CA-0X-0S
FL34942.3
Sheet No.
3D OF 6

HARDWARE OPTIONS



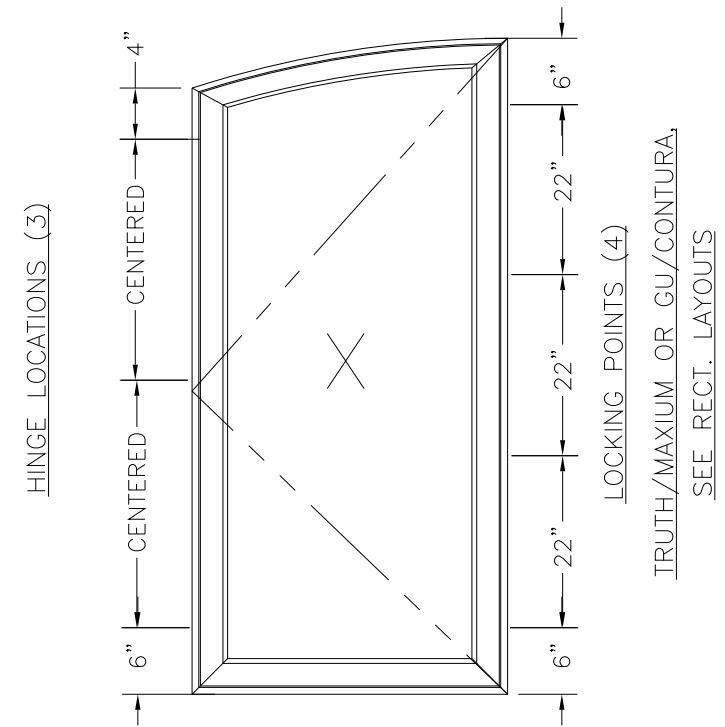
HARDWARE

DESCRIPTION	QTY.	MANUFACTURER
MULTI-POINT LOCK	1	TRUTH (MAXIM)
HINGES	2	TRUTH (2-BAR)
SNUBBERS	3	TRUTH



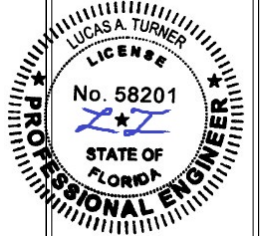
HARDWARE

DESCRIPTION	QTY.	MANUFACTURER
MULTI-POINT LOCK	1	GU (CONTURA)
CONCEALED HINGES	2	GU (CONTURA)
SNUBBERS	3	GU



HARDWARE

DESCRIPTION	QTY.	MANUFACTURER
CONCEALED HINGES or 3.5"x3.5" BUTT HINGES	3	SOSS (#212) McKINNEY



10/18/2023

TE&C
LUCAS A. TURNER, P.E. FL PE 58201
TURNER ENGINEERING & CONSULTING, INC.
PH. 941-380-1574
2428 OLD NACHEZ TRACE TRAIL
CAMDEN, TN 38320

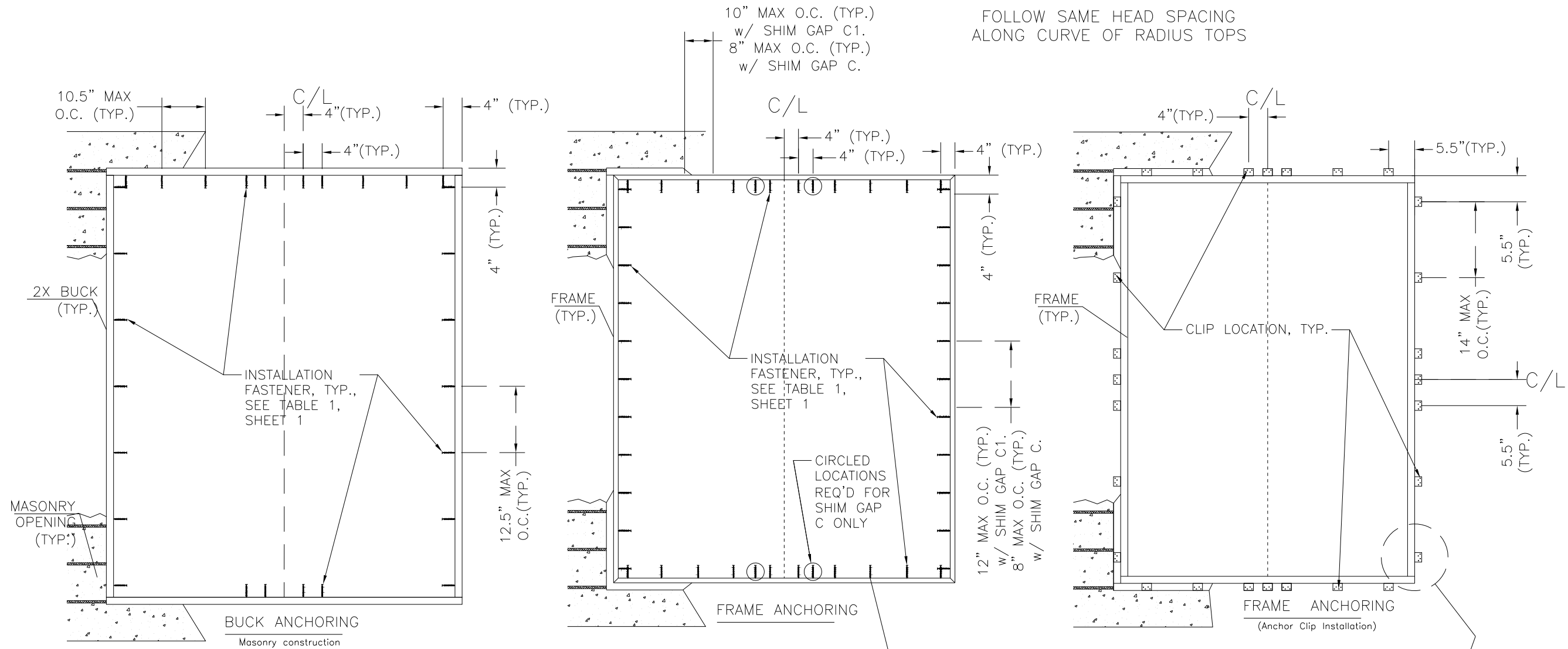
OWW LLC
3001 Tuxedo Ave., West Palm Beach, FL 33405
Ph: 561-478-7233 Fax 561-478-7858

Product: TWIN OUTSWING CASEMENT WINDOWS

HARDWARE DETAILS &
GLASS BUILDS

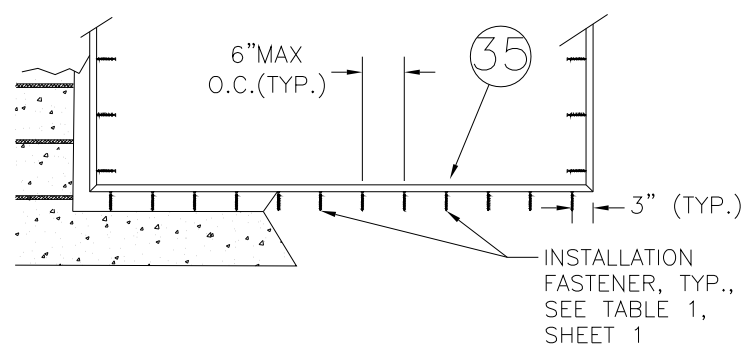
Date: 10-05-15
Scale: None
Drawn: JDS

Dwg: CA-0X-0S
FL34942.3
Sheet No.
4D OF 6

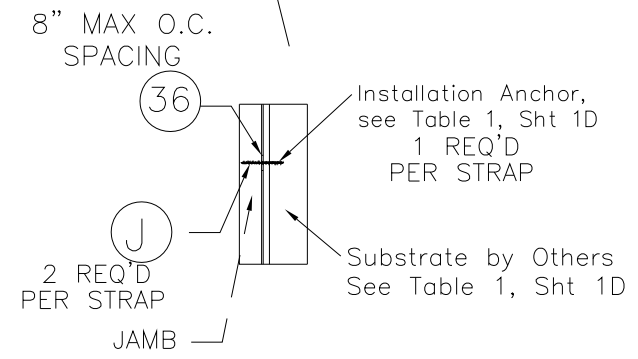


FOLLOW SAME HEAD SPACING
ALONG CURVE OF RADIUS TOPS

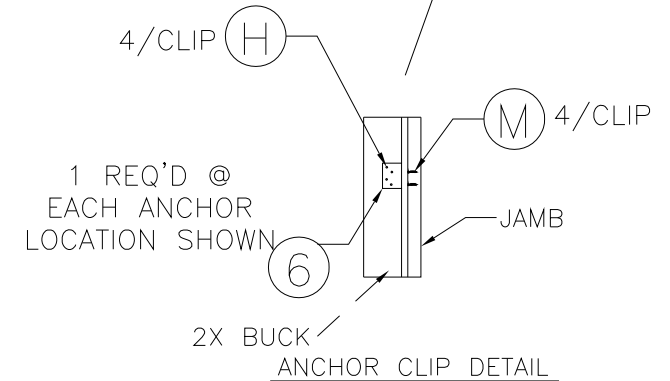
NOTE: STAGGER ANCHORS AS
NEEDED TO ENSURE 4\"/>



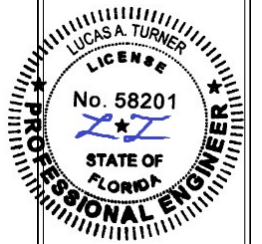
ALTERNATE ALUMINUM SILL ANCHORING



ALTERNATE STEEL STRAP ANCHORING



ANCHOR CLIP DETAIL



10/18/2023

TE&C
LUCAS A. TURNER, P.E. FL PE 58201
TURNER ENGINEERING & CONSULTING, INC.
PH. 941-360-1574
2428 OLD NATCHEZ TRACE TRAIL
CAMDEN, TN 38320

OWW LLC
3001 Tuxedo Ave., West Palm Beach, Fl. 33405
Ph. 561-478-7233 Fax 561-478-7858

Product: TWIN OUTSWING CASEMENT WINDOWS

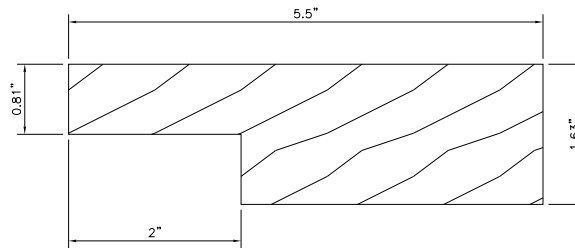
BUCK & FRAME ANCHORING

Date: 10-05-15
Scale: None
Drawn: JDS

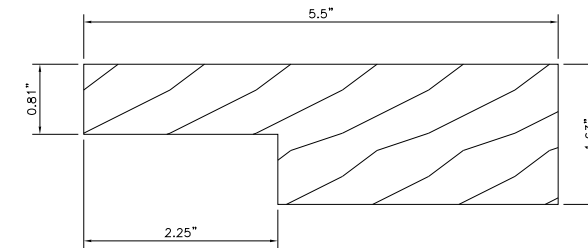
Dwg: CA-OX-OS
FL34942.3
Sheet No.
5D OF 6

BILL OF MATERIALS		
ITEM #	DESCRIPTION	MATERIAL
A	1X BUCK (SG>=0.55)	WOOD
B	2X BUCK (SG>=0.55)	WOOD
C	1/2" MAX.SHIM SPACE	-
C1	1/4" MAX.SHIM SPACE	-
E	SOLID CONCRETE CONFORMING TO ACI 301 OR CMU BLOCK CONFORMING TO ASTM C90 (SEE TABLE 1, SHT 1)	MASONRY
H	#8 X 1-1/2" PFH WOOD SCREW	STEEL
J	#10 X 1-1/2" PFH WOOD SCREW	STEEL
L	#12 X 1-3/4" PFH WOOD SCREW	STEEL
M	#8 X 3/4" PPH SMS	STEEL
1	FRAME (OPERABLE)	WOOD
1A	FRAME (FIXED)	WOOD
3	SASH (MOULDING TO INTERIOR)	WOOD
3A	SASH (MOULDING TO WEATHER)	WOOD
3B	FIXED SASH (MOULDING TO INTERIOR)	WOOD
3C	FIXED SASH (MOULDING TO WEATHER)	WOOD
4	GLAZING BEAD (I.G.)	WOOD
5	GLAZING BEAD (MONO.)	WOOD
6	ANCHOR BRACKET (SIMPSON STRONG-TIE A23Z)	STEEL
7	WEATHERSTRIP ROVER PLASTIK 142AC OR SIMILAR	-
8	WEATHERSTRIP (SEALMAX TIMBERSEAL)	-
10	#10 X 2-1/2" FH WOOD SCREW	STEEL
18	3.5" X 3.5" BUTT HINGE	STEEL
19	#10 X 1" PFH WOOD SCREWS	STEEL
20	MULTI-POINT LOCK (TRUTH MAXIM)	-
21	MULTI-POINT LOCK (GU CONTURA)	-
22	MULTI-POINT LOCK (SEGENIA FAVORIT-312)	-
24	SNUBBERS (GU OR TRUTH)	STEEL
25	2-BAR HINGE (TRUTH)	STEEL
26	CONCEALED PIVOT HINGE (GU)	STEEL
35	ALUMINUM SILL ANCHOR	ALUM
36	STEEL ANCHOR STRAP	STEEL

NOTE: ALL WINDOW FRAME WOOD: SG=0.50 MIN. (MAHOGANY OR SIMILAR)

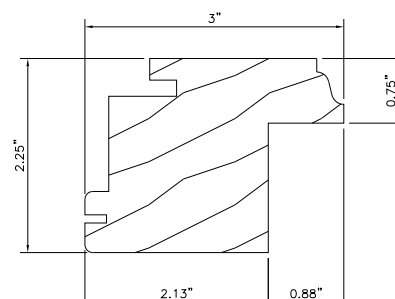


① FRAME OPERABLE

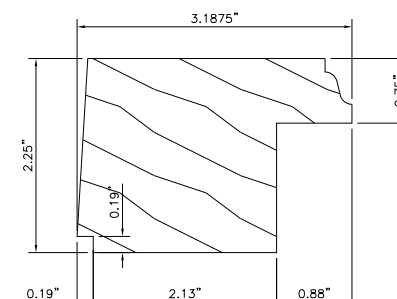


①A FRAME FIXED

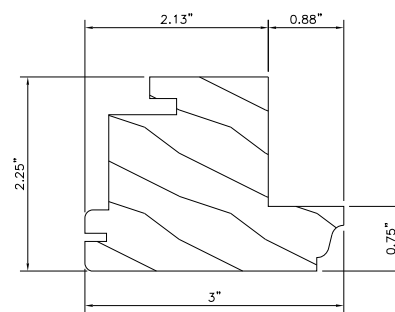
NOTE: ALL WOOD PROFILE DIMENSIONS ARE MINIMUMS



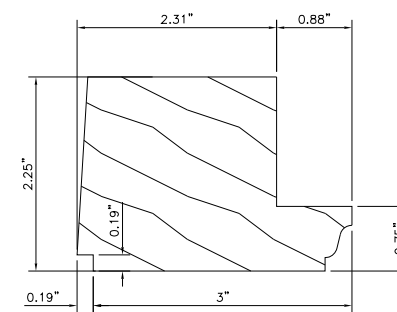
③ SASH MOULDING TO INTERIOR



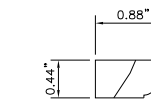
③B FIXED SASH MOULDING TO INTERIOR



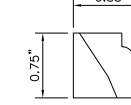
③A SASH MOULDING TO WEATHER



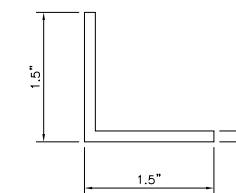
③C FIXED SASH MOULDING TO WEATHER



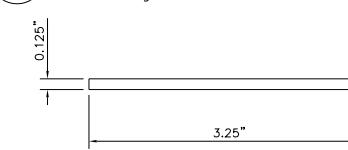
④ GLAZING BEAD 7/8" I.G.



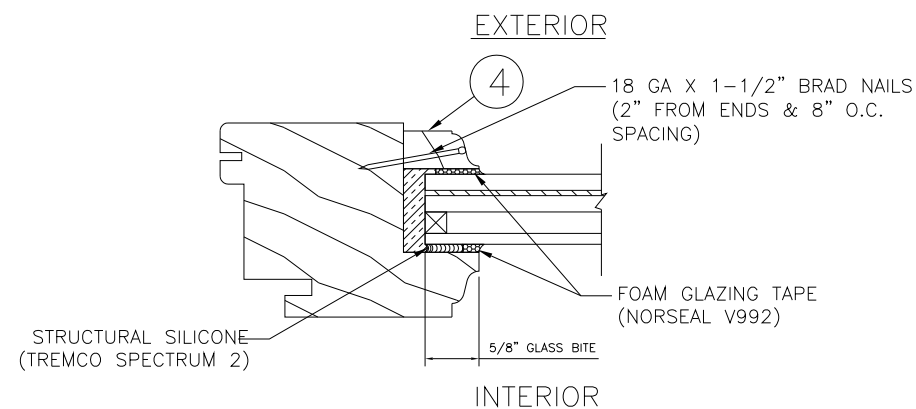
⑤ GLAZING BEAD 7/16" MONO.



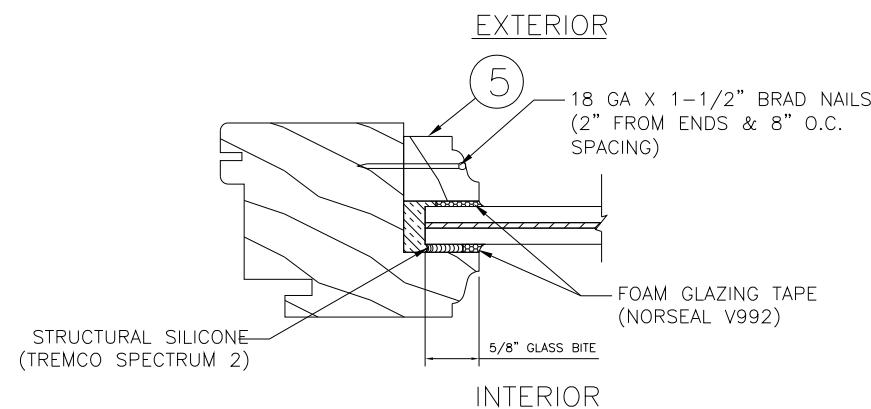
③5 ALUMINUM ANCHOR Full Length



③6 STEEL ANCHOR STRIP 1.25" Wide



① GLAZING DETAIL



② GLAZING DETAIL

GLASS TYPES AND STRUCTURE

- ① 15/16" (NOM.) LAMINATED INSULATING GLASS
1/8" EXTERIOR HEAT STRENGTHENED (IN HVHZ, ALLOWED ONLY WITHIN 30 FT OF GRADE) OR FULLY TEMPERED /
1/4" AIR SPACE WITH ALUMINUM SPACER /
3/16" ANNEALED
.075" INTERLAYER: SAFLEX CP BY EASTMAN CHEMICAL COMPANY /
3/16" ANNEALED
- ② 7/16" (NOM.) STORM GLASS
3/16" HEAT STRENGTHENED /
.075" INTERLAYER: SAFLEX CP BY EASTMAN CHEMICAL COMPANY /
3/16" HEAT STRENGTHENED



10/18/2023

TE&C
LUCAS A. TURNER, P.E. FL PE 58201
TURNER ENGINEERING & CONSULTING, INC.
PH. 941-380-1574
2428 OLD NATCHEZ TRACE TRAIL
CAMDEN, TN 38320

OWW LLC

3001 Tuxedo Ave., West Palm Beach, FL 33405
Ph. 561-478-7233 Fax 561-478-7858

Product: TWIN OUTSWING CASEMENT WINDOWS

BILL OF MATERIALS, COMPONENTS & GLAZING DETAILS

Date: 10-05-15
Scale: None
Drawn: JDS

Dwg: CA-0X-0S
FL34942.3
Sheet No. 6D OF 6